

# The Arubas create a pleasant indoor climate



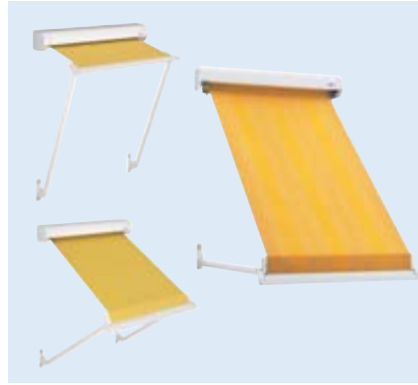
We reserve the right to make technical alterations. December 2006

Window  
awnings  
Aruba  
Carré/Round/  
Vertical/  
Droparm/  
Markisolette





Aruba Vertical with rail guides



Aruba Droparm



Aruba Vertical with wire guides



Aruba Markisolette

**The Aruba range offers the most suitable kind of shade for almost every type of window**

The **Aruba Carré/Round Vertical** is particularly good for protecting your privacy and as a sun blind, e.g. in the workplace. The **Aruba Carré/Round Vertical** with wire is essentially the same. It is the "lighter version" if you don't want a guide rail.

The **Aruba Carré/Round Droparm**, whose bottom section can be opened outwards, provides shade from the sun as well as a view of the outside.

The **Aruba Carré/Round Markisolette** looks good and is especially suitable for high windows. It is particularly popular for the architectural design of façades.

## Technical details

### Multi-section units up to four sections (all versions)

#### Technical equipment

- Bottom rail connected on floating bearings
- Greater freedom of movement in one-sided winds (all versions)
- Different brackets available (all versions)
- Gutter in bottom rail (Droparm)
- Side guiding with steel wires (Vertical wire version)
- Guide rail as guiding element (Vertical rail version, Markisolette)
- Quiet-running thanks to the special sliding support mechanism (Vertical with wire and rail guides)

### Powder coating (all versions)

- In 47 standard colours
- Surface permanently resistant to scratching and weather

### Pattern (all versions)

- Large selection of fabrics from the current weinor collections

### Drive (all versions)

- Motor as standard

## Options

### Fixings

- Casing bracket left or right (all versions)
- Arm wall bracket (Droparm)
- Wire bracket (wire)

### Valance

- The Aruba Droparm is available with an optional valance

### Drive

- Crank operation
- Remote controlled motor

### Controls

- Sun and wind monitor
- Rain monitor

## The technical product highlights of the **Aruba Carré/Round Vertical** with rail guides

---



*Aruba Carré Vertical open ...*



*... half open ...*



*... and retracted.*

### **The sliding support mechanism**

The special sliding support mechanism ensures quieter and safe operation.



*Sliding support mechanism*

### **The floating bearing bottom rail connection**

This prevents tilting in high winds.

### **The faceplate**

The **Aruba Vertical** with rail guides comes with a faceplate on the box.

### **The coupling**

Up to four sections of the **Aruba Vertical** with rail guides can be coupled.

## The technical product highlights of the Aruba Carré/Round Vertical with wire guides



Aruba Carré Vertical wire version open ...



... half open ...



... and retracted.

### Side-mounted guide elements of stainless steel wire

With essentially the same functions as the **Aruba Vertical** with rail guides, it is the visually "lighter" alternative. Considerations when fitting can make the wire version the right choice for the window.

### The weinor tensioner

What makes it so special: after being tensioned in situ, the weinor tensioner makes sure the wire remains taut:

- The wire does not sag after fitting or from stretching.
- The tensioner is in the cassette and protected from the elements.

### Stainless steel guide bolt

It goes without saying that the bolt the wire goes through is of stainless steel, and the bottom rail with floating bearing allows enough "play", e.g. in high winds: no tilting, safe and clean running.



Stainless steel bolt in bottom rail and simple wire tensioner on the wire bracket

### The wire bracket

The various wire brackets are designed for all normal fitting situations.

The windowsill wire bracket can be screwed on to a windowsill, for example.

The small wire bracket is popular for firm metal surfaces. The large wire bracket is supplied as standard and the distance between the holes is great, which makes it suitable for such locations as brickwork.



Windowsill wire bracket    Small wire bracket    Large wire bracket

### The faceplate

The **Aruba Vertical** with rail guides comes with a faceplate on the box.

### The coupling

Up to four sections of the **Aruba Vertical** with wire guides can be coupled.

**i** It is essential that all surfaces are checked for their stability and strength before attaching brackets to them.

## The technical product highlights of the Aruba Carré/Round Droparm



*Aruba Carré Droparm open ...*



*... half open ...*



*... and retracted.*

### The rotating bottom rail connection

This reduces tilting in high winds.



*Bottom rail connected on floating bearings*

### The droparms

The variable droparms with internal springs allow the arms to turn to a maximum angle of 150°.



*Arm angled at 150°*

### Optional valance

The Aruba Droparm is available with an optional valance.



*Aruba Droparm with valance*

### The bottom rail

The bottom rail with enforced closing mechanism closes flush with the casing. The fabric remains protected in the casing.

### The coupling

Up to four sections of the Aruba Droparm can be coupled.



## The technical product highlights of the Aruba Carré/Round Markisolette



*Aruba Carré/Round Markisolette open ...*

**The arm link on floating bearings**  
This prevents tilting in high winds.



*On floating bearings*

**The coupling**  
Up to four sections of the Aruba Markisolette can be coupled.

**The faceplate**  
The Aruba Markisolette has a faceplate on the casing.



*... half open, the arms automatically swing outwards ...*

**The lock safety device**  
It prevents the arm mechanism from being lifted up.



*Once the arm has opened a little the lock safety device clicks in. The point at which it turns can be adjusted.*



*... vertical fabric, and retracted.*

**The arms**  
The arms with internal springs allow the Aruba Markisolette to be angled at up to a maximum of 150°.



*Arms with internal springs      Arm angled at 150°*

## Applicable to all versions



Aruba Carré



Aruba Round



### The shape of the casing

The classic angular shape of the **Aruba Carré** or the rounded shape of the **Aruba Round**? It's purely a matter of taste.

### The look of the casing

All **Aruba** casings look the same, which makes them ideal for joining.

### Crank operated drive

The drive with offset handle leading inside with an offset handle (90°). This makes it possible to operate from the inside (only on single-section units).

### Multi-section units

What is important with multi-section units is that they work safely and that the sections can be coupled easily. Multi-section units are fitted with a motor drive as standard.



The weinor drive shaft is connected with a fork and pin system

It goes without saying that they are easy to service and fit.



This view can only be seen during assembly. Afterwards, only solid and fault-free operation count.

## Product benefits at a glance

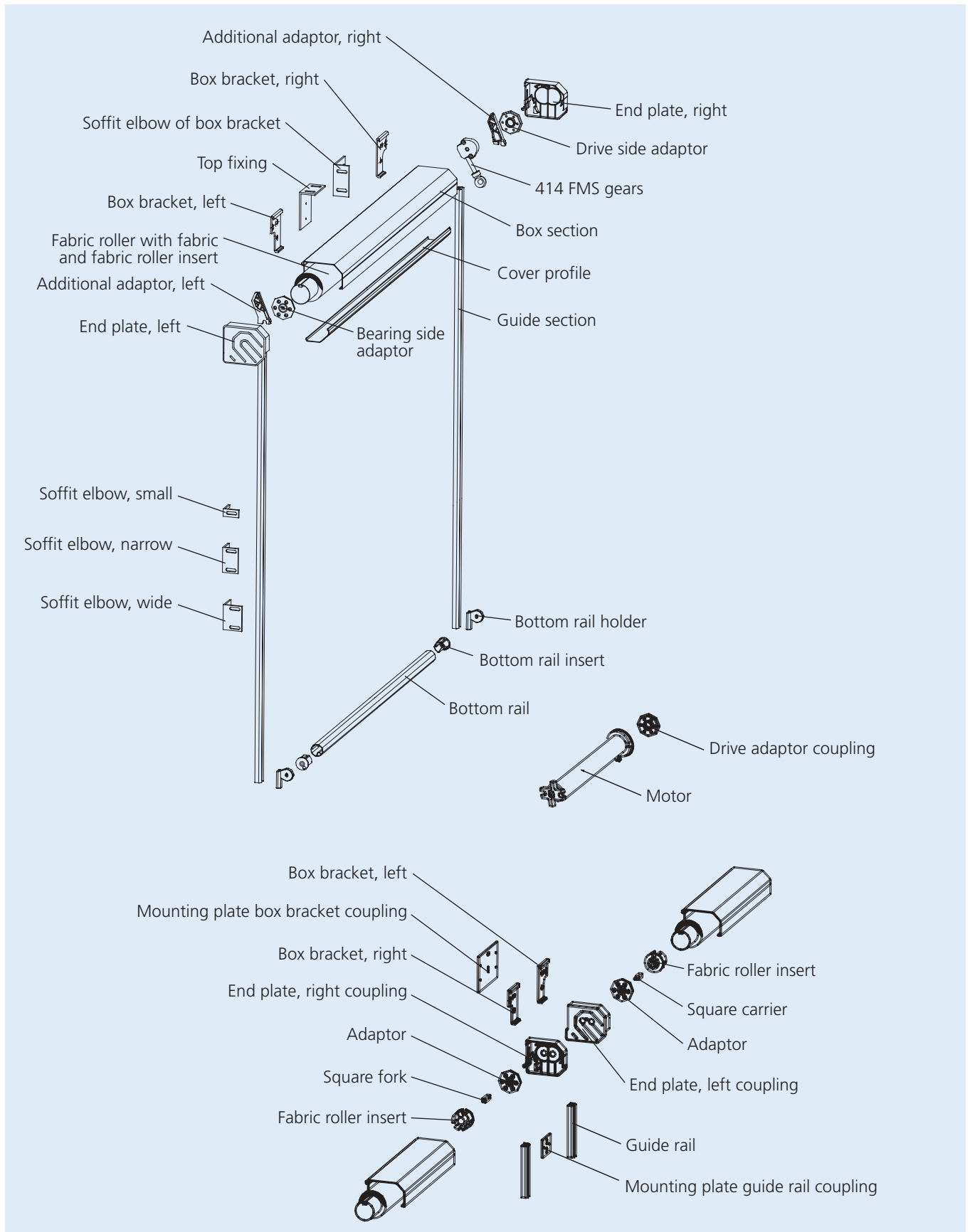
Designation	Material	Surface treatment	Qualities	Your advantages
Casing section Bottom rail Guide section Support bar	Aluminium, extruded	Chrome-free passivised, powder coated	Surface permanently resistant to scratching and weather	You choose the powder coating colour for your <b>Aruba Carré/Round</b> sections to suit your house or conservatory. Pre-treating the profiles prevents corrosion altogether, even on damaged surfaces.
Casing in faceplate	Aluminium, extruded	Chrome-free passivised, powder coated	Surface permanently resistant to scratching and weather	Easy access for servicing.
Roller in guide section	Stainless steel Plastic		Non-corrosive	The <b>Aruba</b> opens and retracts safely.
Support brackets Fixing brackets	Cast aluminium	Chrome-free passivised, powder coated	Non-corrosive	Rust protection, down to the last detail with pre-treatment and powder coating.
Screws and connectors	Stainless steel		Non-corrosive	No rust, no appreciable wear and tear
Drive motor			Precisely manufactured robust design	Easy operation as standard. Optionally with remote controlled motor and remote control unit. See the Accessories section for details.
Droparm lock ( <b>Aruba Markisolette</b> )	Plastic			Prevents the arm mechanism from being lifted up.
Awning material	Acrylic	Spin-jet dyed, impregnated	Light-fast and weatherproof	The weinor fabric collection offers a wide variety of sophisticated patterns for the <b>Aruba Carré/Round</b> .



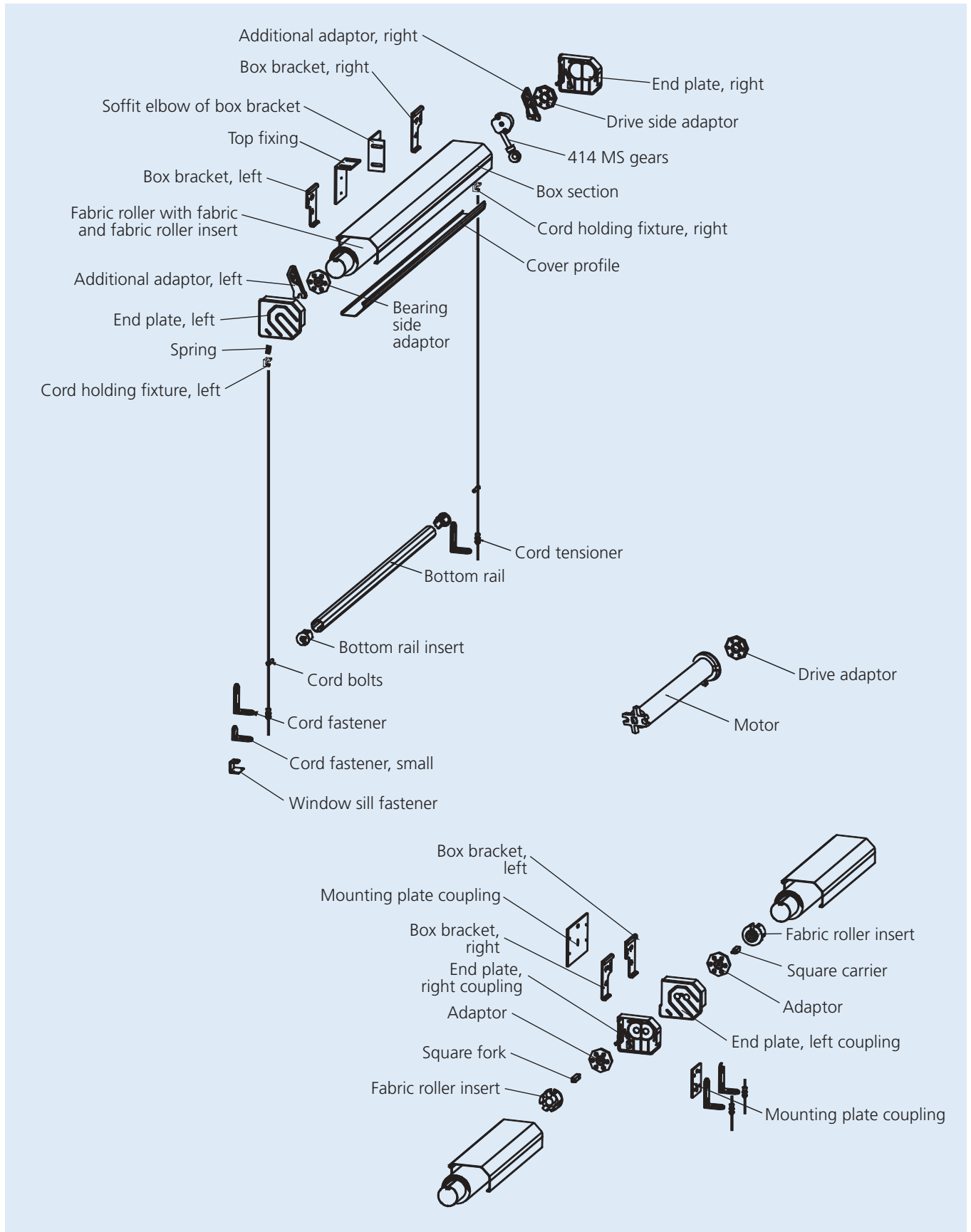
## Overview of product options

Designation	Material	Surface treatment	Qualities	Your advantages
Awning fabric from external suppliers	Acrylic	Spin-jet dyed, impregnated	Warp printed watertight	Even greater selection of unicolour and striped fabrics.
	Soltis	Special coated polyester fibre	Micro-vented, light permeable	Is suitable when the shade has to be more light and air permeable than acrylic.
Drive crank mechanism with limit stop	Gearing 6:1		Gears with limit stop, easy to operate	Completely free from operating error. The limit stop prevents the fabric from rolling up incorrectly.
Remote-controlled drive				Upon request, an integrated tubular motor with <b>WeiTronic</b> receiver can be fitted. The <b>WeiTronic Remoto</b> handheld remote control makes for easy operation of the awning. See the Accessories section for more details.
Fixings Standard and special versions	Aluminium, extruded, sections cut and machined	Machine-edged, chrome-free pre-treated, powder coated	Surface permanently resistant to scratching and weather	Sophisticated quality, precise and weather resistant down to the very last detail. Using identical components makes maintenance easier.

## Exploded drawing of the Aruba Carré Vertical with rail guides

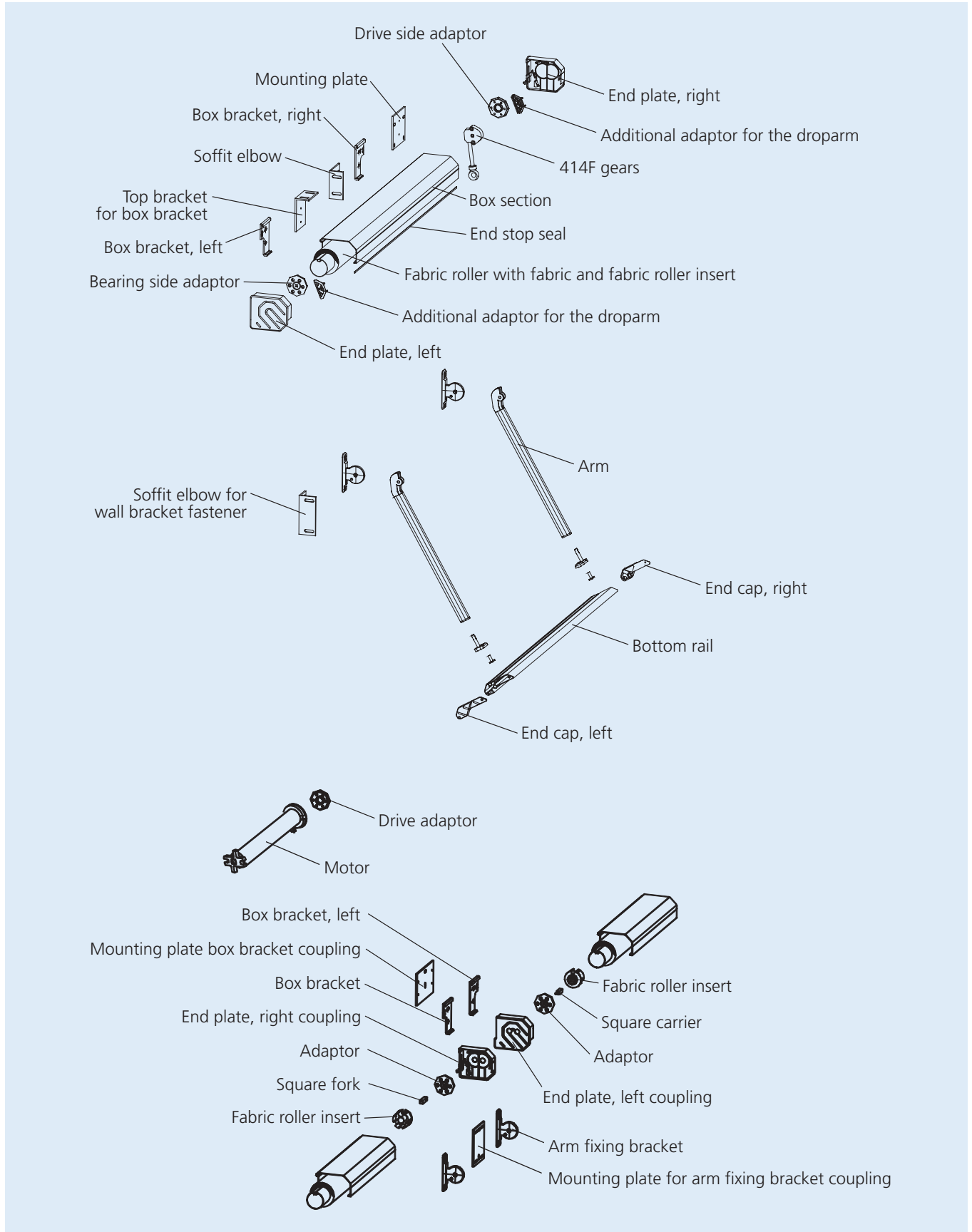


## Exploded drawing of the Aruba Carré Vertical with wire guides

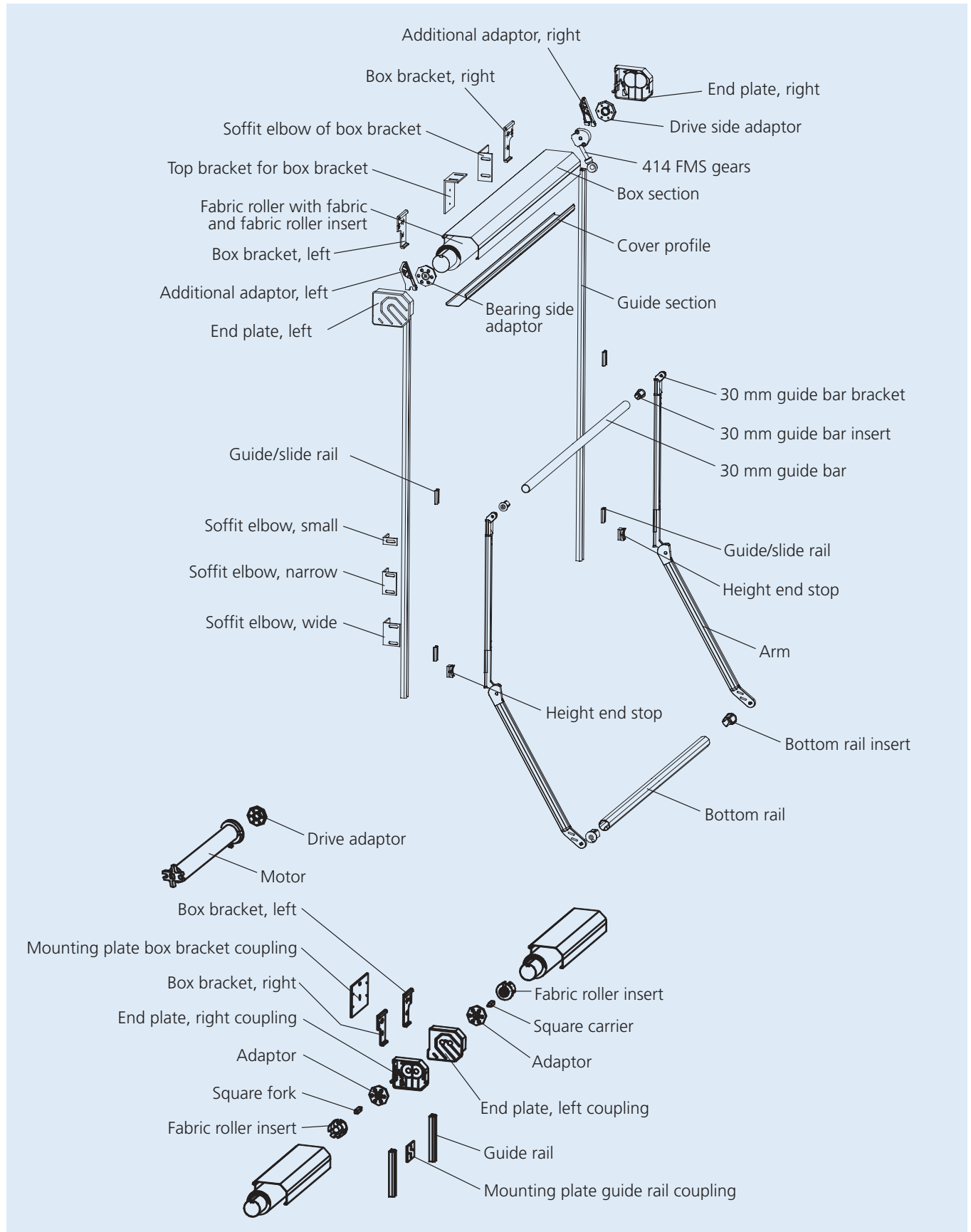


We reserve the right to make technical alterations. December 2006

## Exploded drawing of the Aruba Carré Droparm

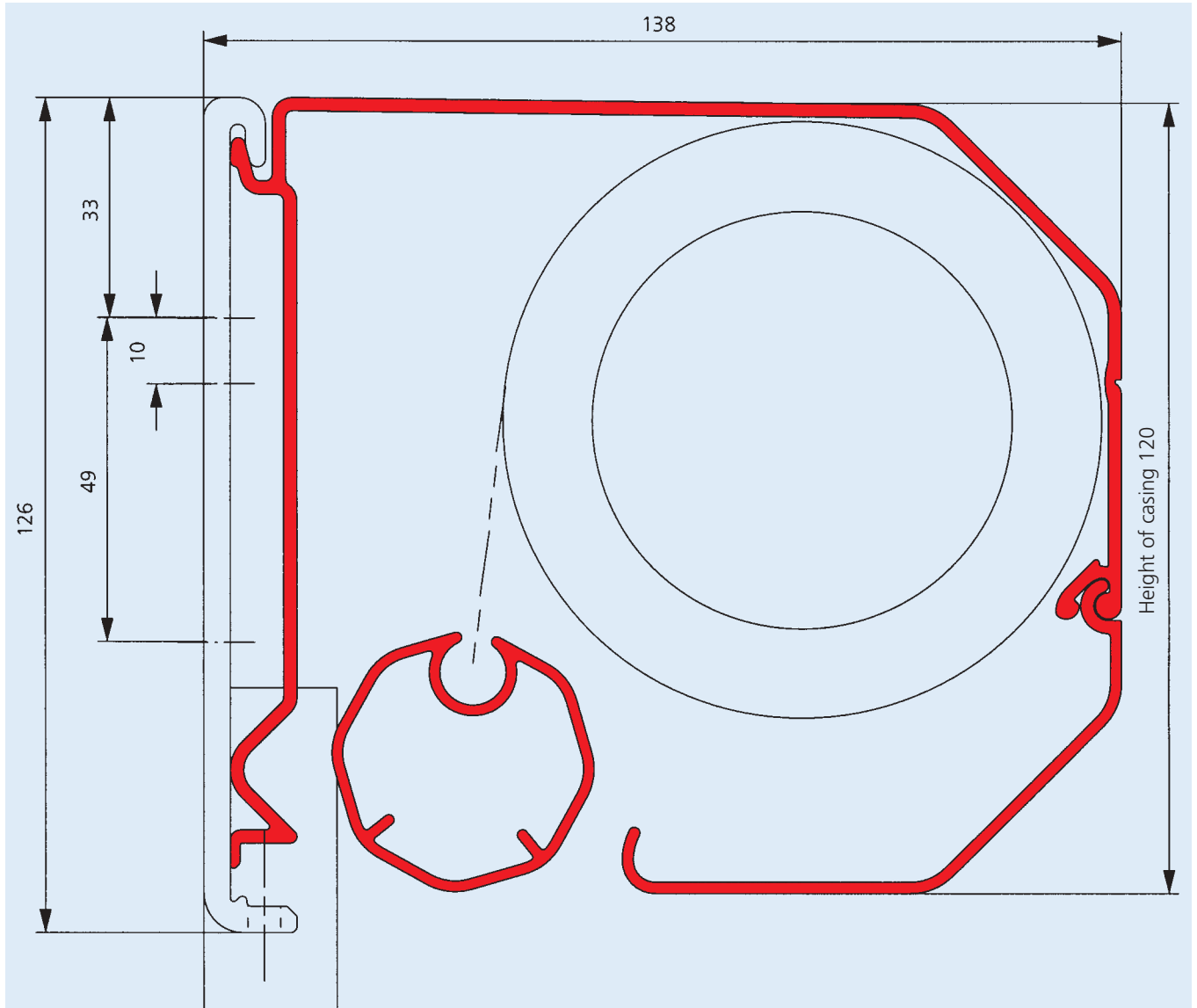


## Exploded drawing of the Aruba Carré Markisolette

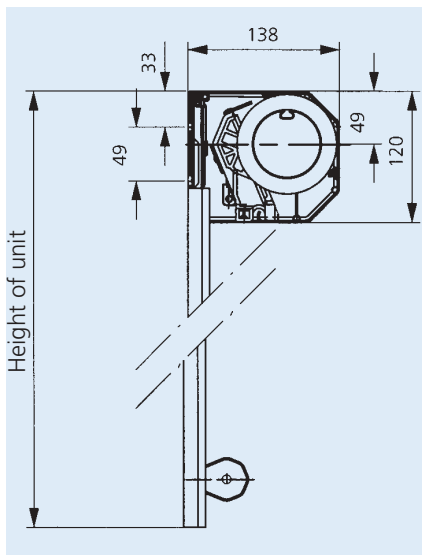


We reserve the right to make technical alterations. December 2006

## Cross-section of Aruba Carré Vertical with rail guides – not to scale



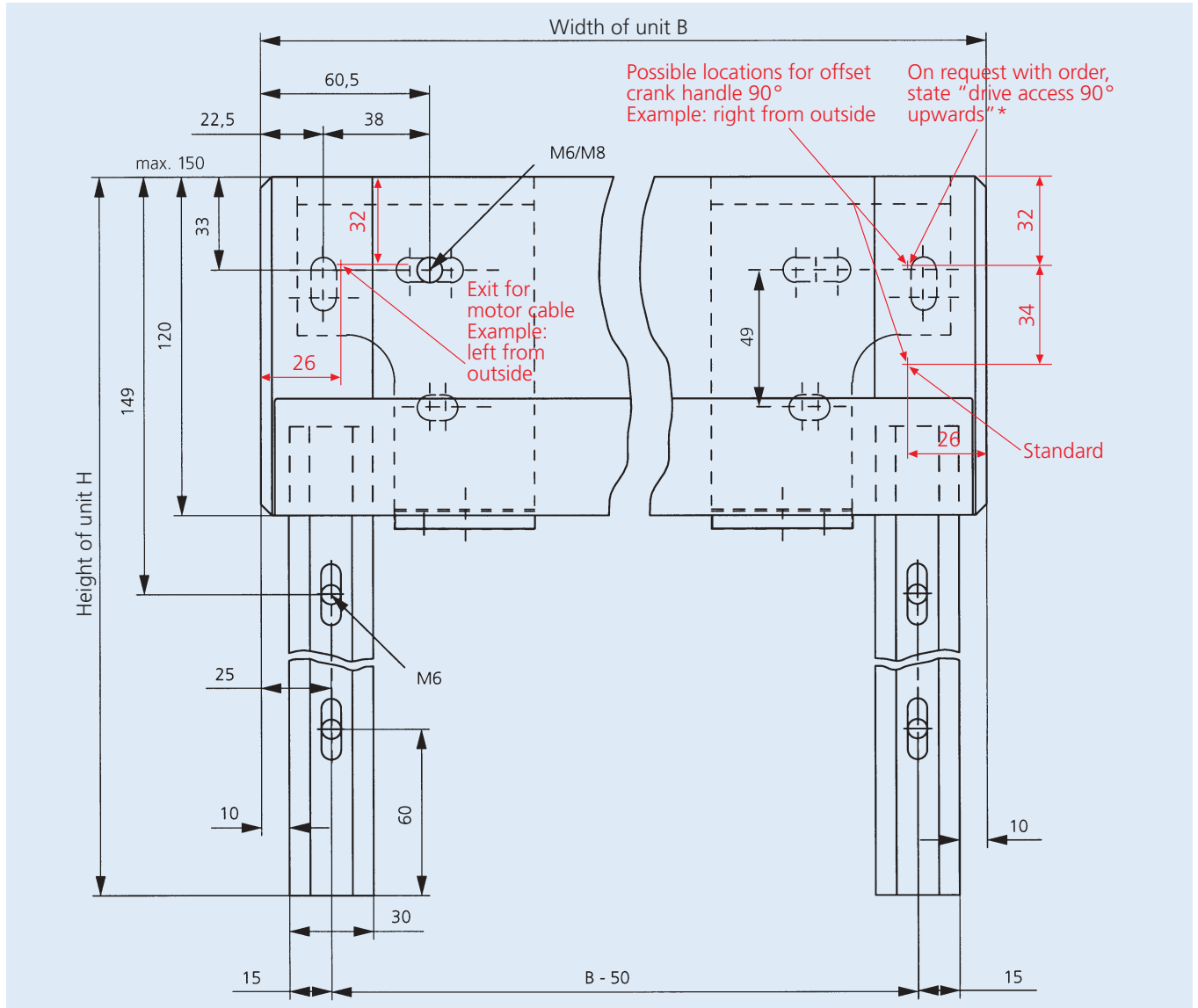
We reserve the right to make technical alterations. December 2006



Side view



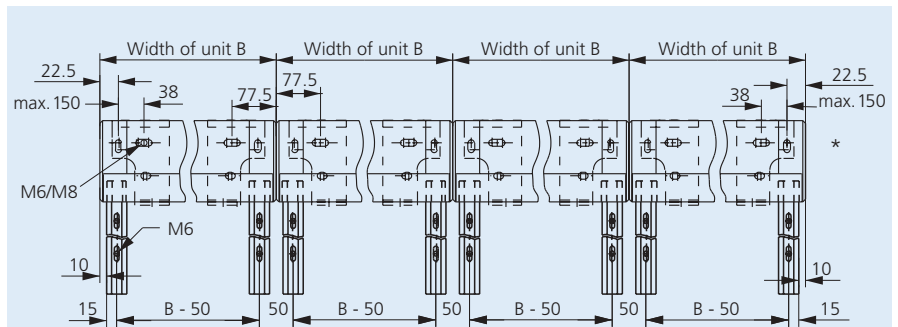
## Assembly configuration of the Aruba Carré Vertical with rail guides



\* see also page 30

## Coupling the Aruba Carré Vertical with rail guides

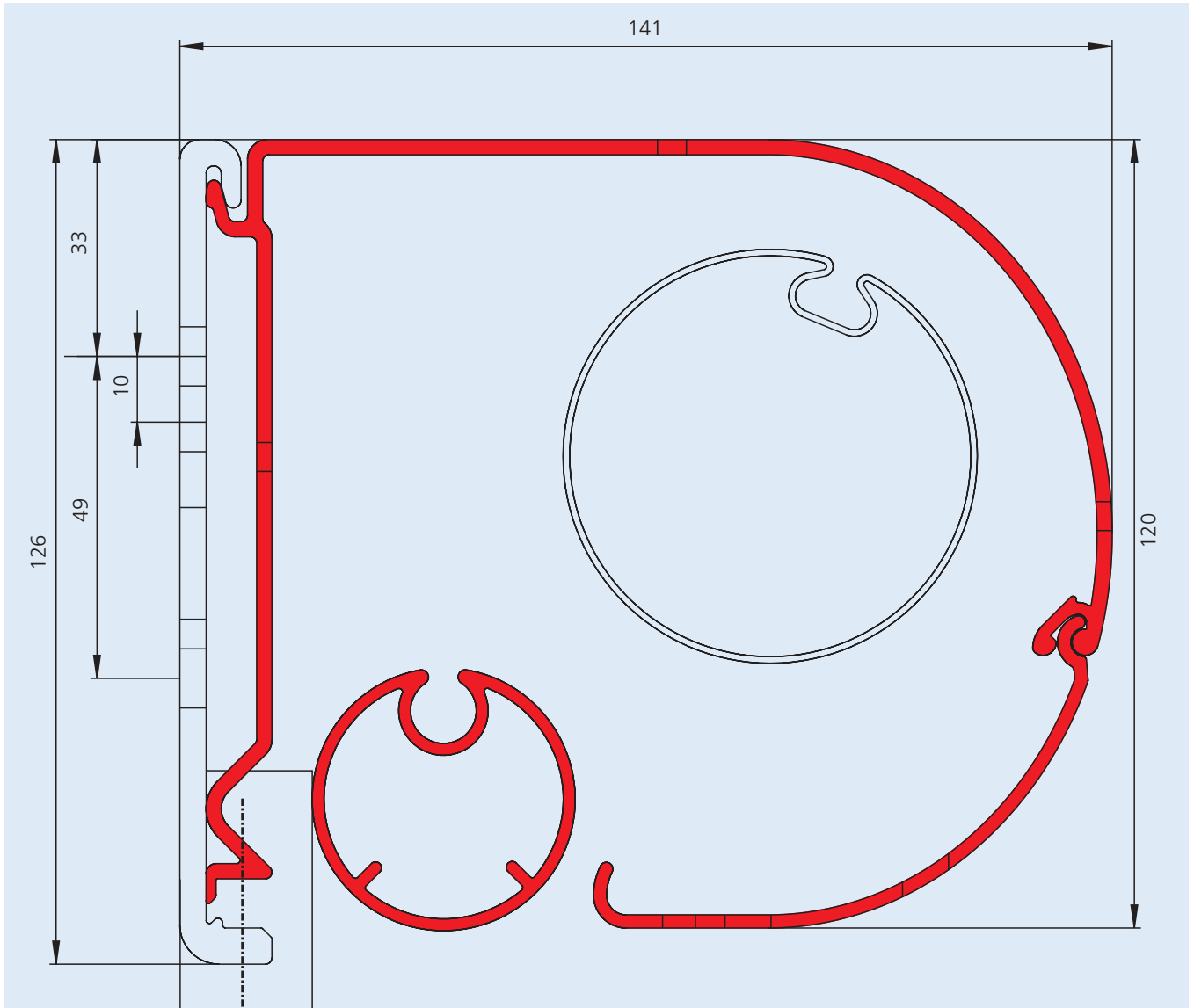
### Four-section unit



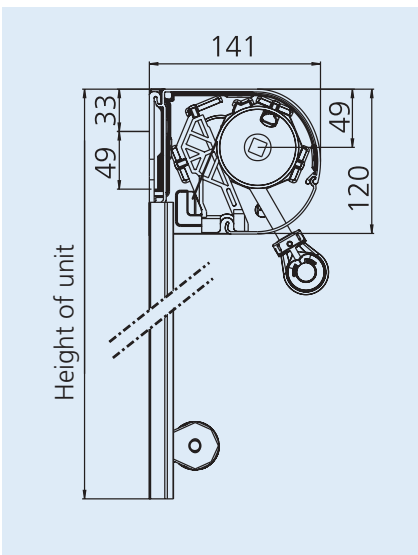
**Note:** On two- and three-section units, the dimensions of the inner units are altered accordingly.

\* 1.6 cm play required on bearing side for assembly.

## Cross-section of Aruba Round Vertical with rail guides – not to scale

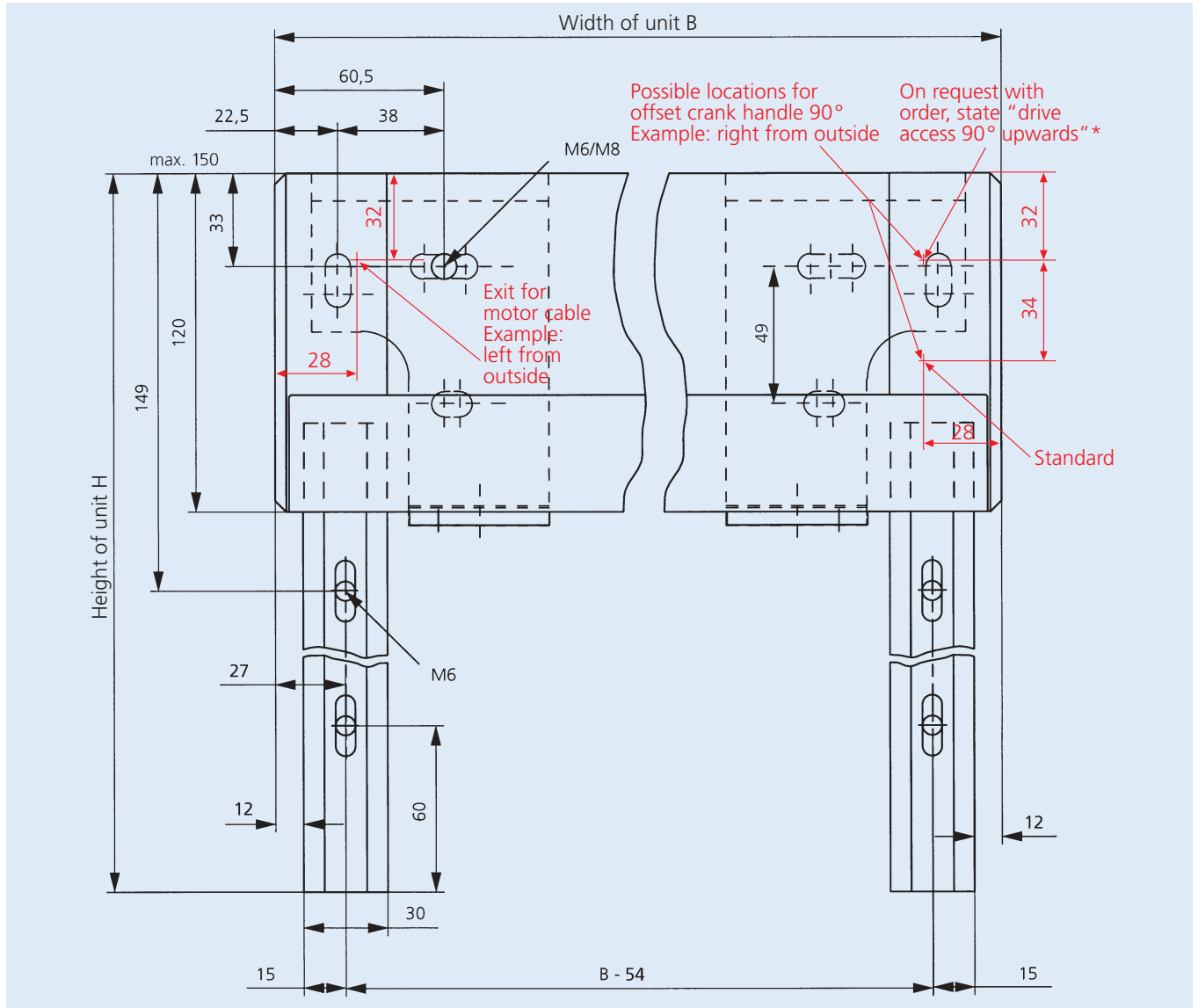


We reserve the right to make technical alterations. December 2006



Side view

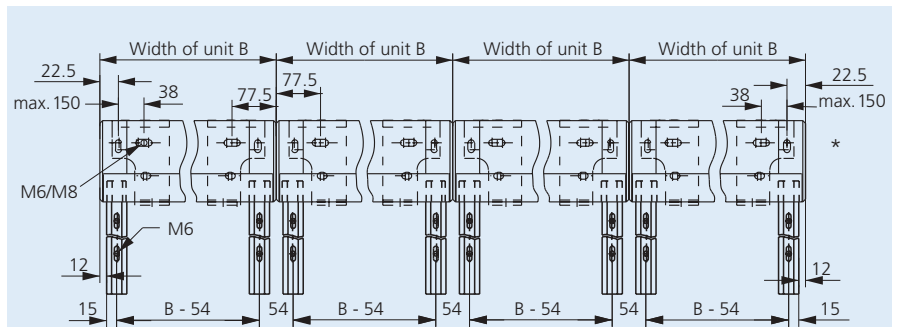
## Assembly configuration of the Aruba Round Vertical with rail guides



\* see also page 30

## Coupling the Aruba Round Vertical with rail guides

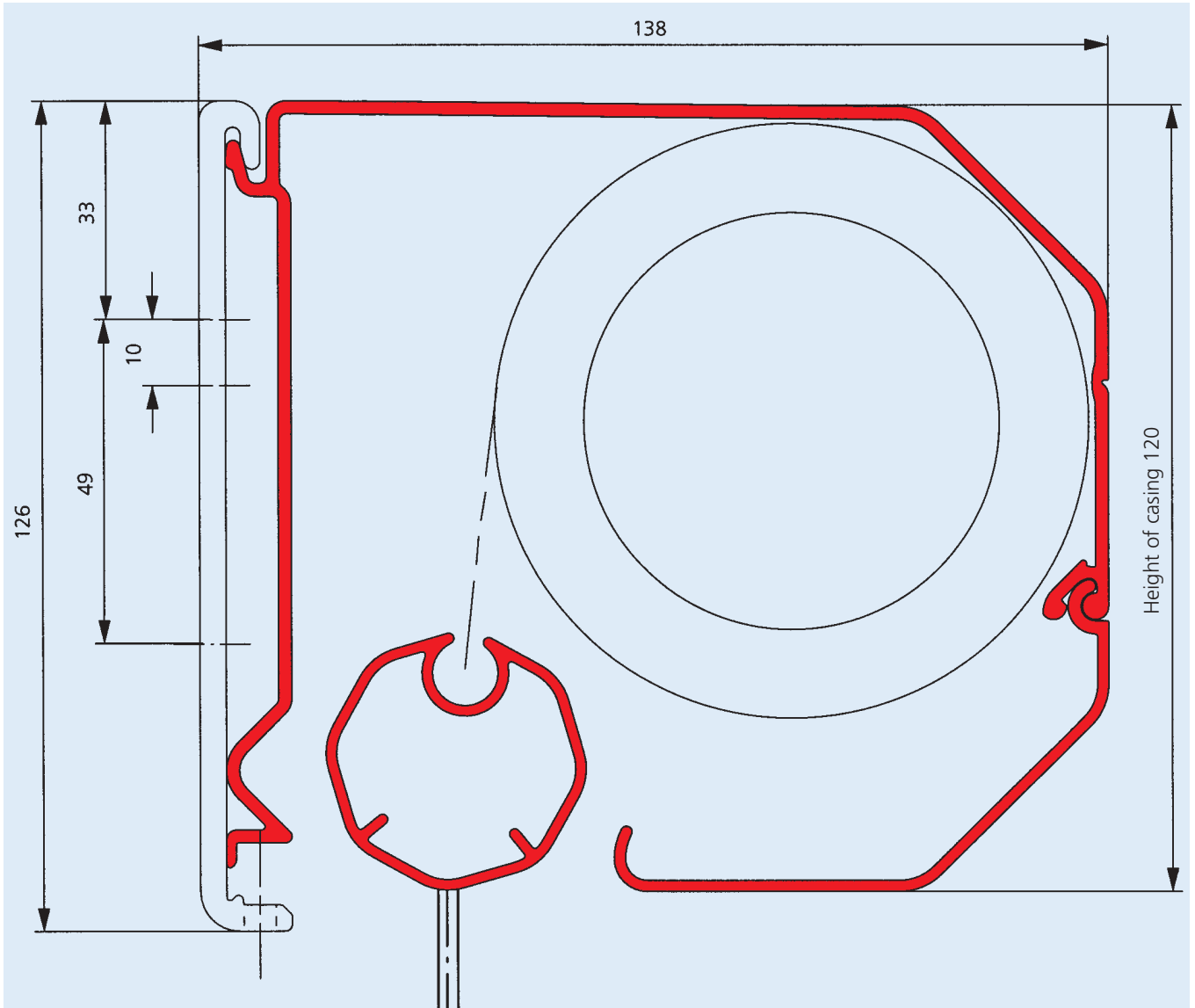
### Four-section unit



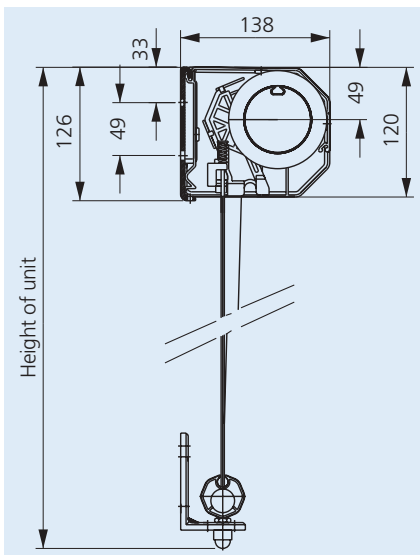
**Note:** On two- and three-section units, the dimensions of the inner units are altered accordingly.

\* 1.6 cm play required on bearing side for assembly.

## Cross-section of Aruba Carré Vertical with wire guides – not to scale

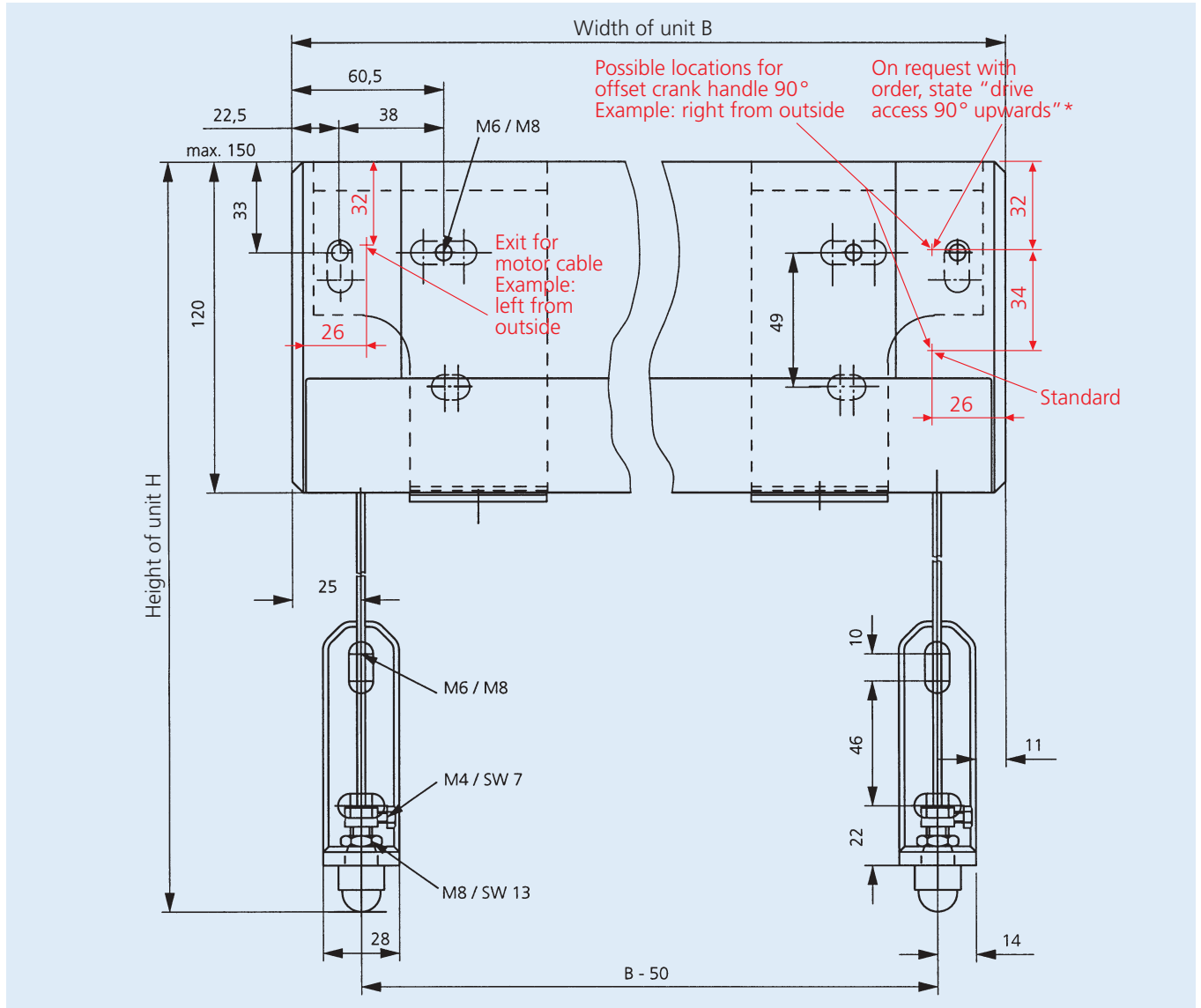


We reserve the right to make technical alterations. December 2006



Side view

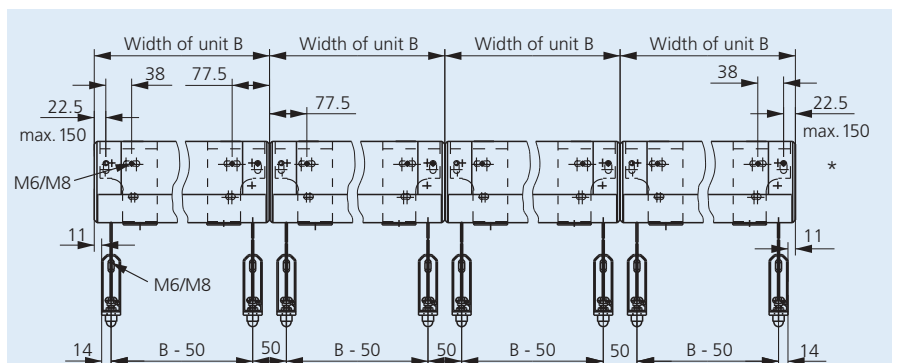
## Assembly configuration of the Aruba Carré Vertical with wire guides



\* see also page 30

## Coupling the Aruba Carré Vertical with wire guides

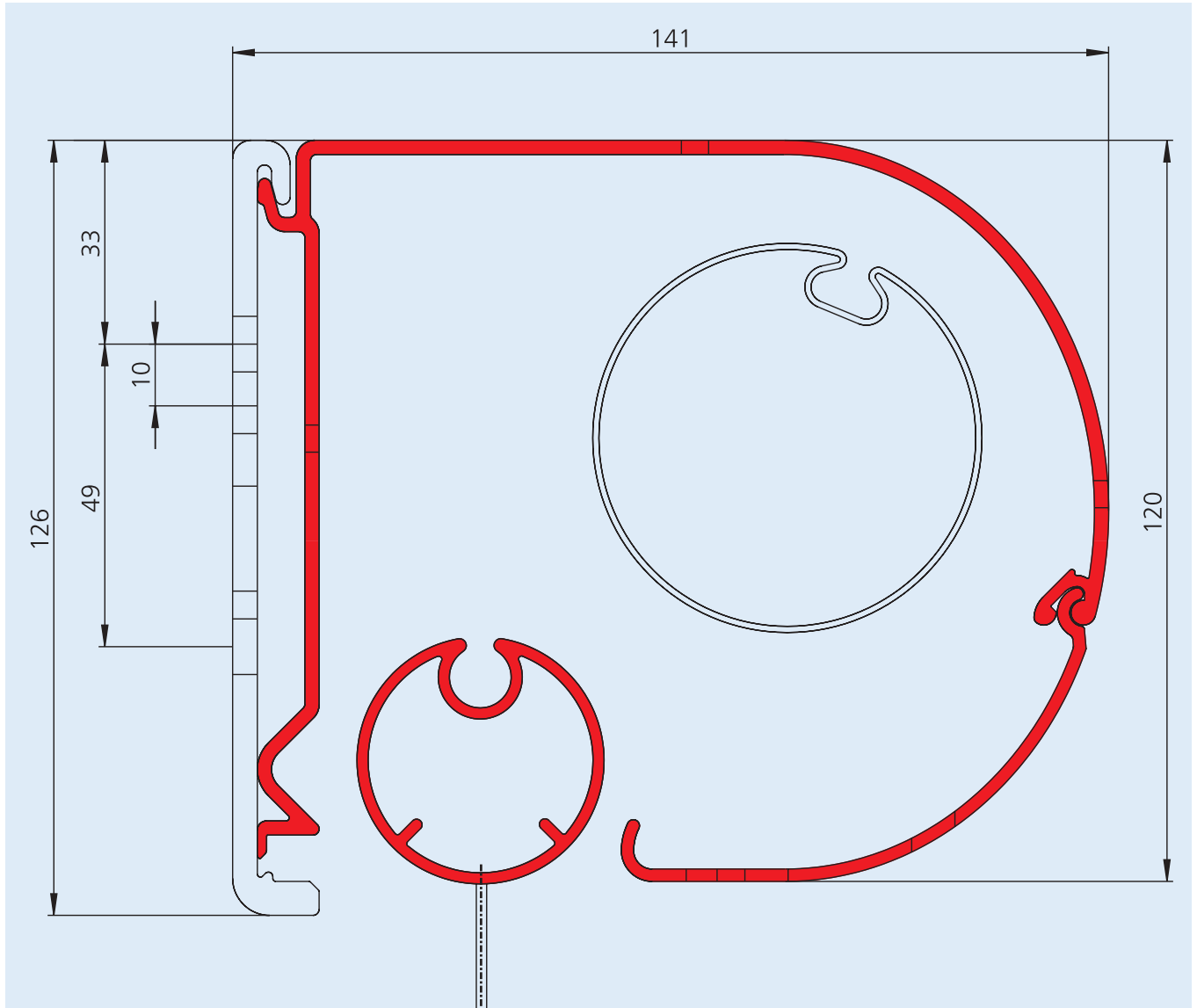
### Four-section unit



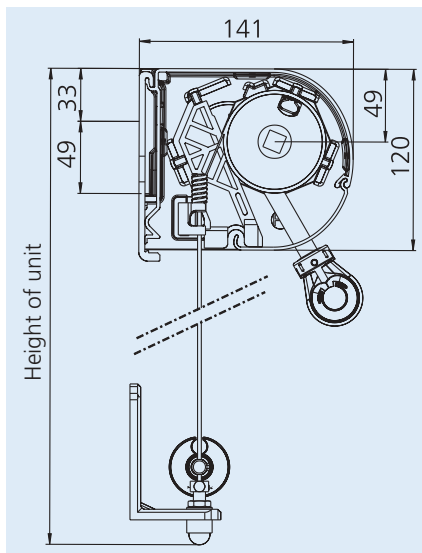
**Note:** On two- and three-section units, the dimensions of the inner units are altered accordingly.

\* 1.6 cm play required on bearing side for assembly.

## Cross-section of Aruba Round Vertical with wire guides – not to scale

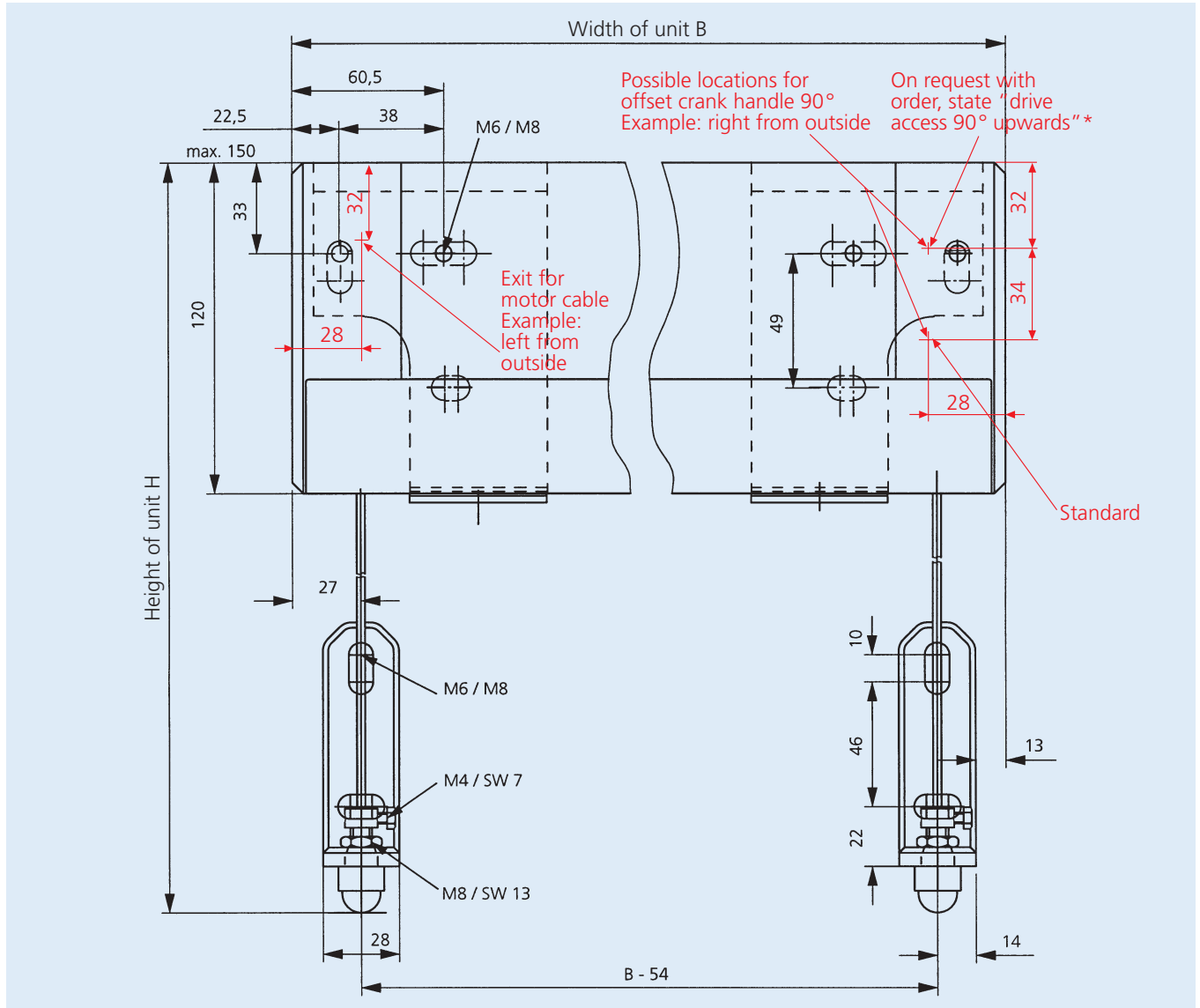


We reserve the right to make technical alterations. December 2006





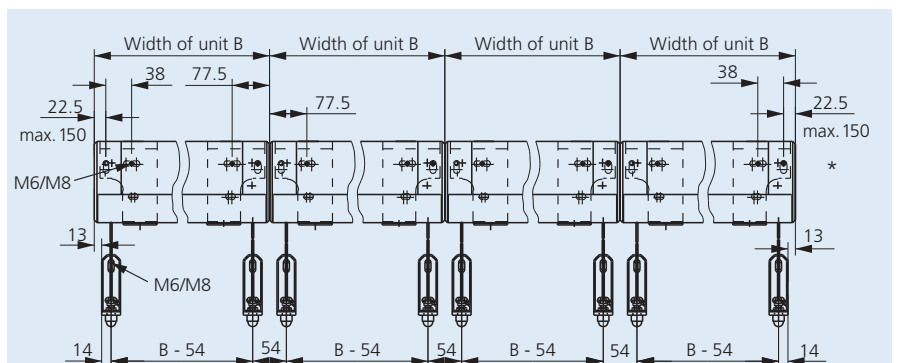
## Assembly configuration of the Aruba Round Vertical with wire guides



\* see also page 30

## Coupling the Aruba Round Vertical with wire guides

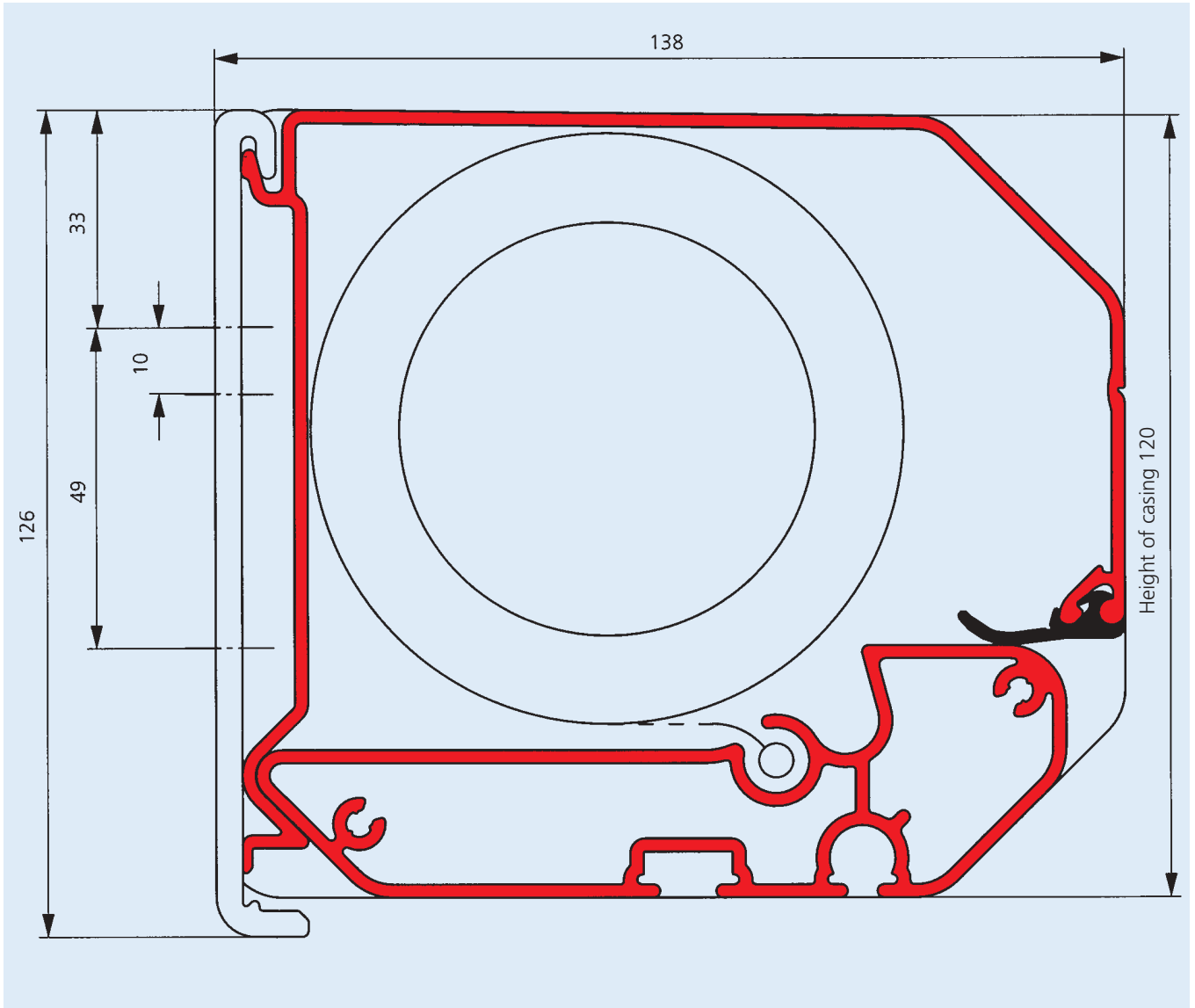
### Four-section unit



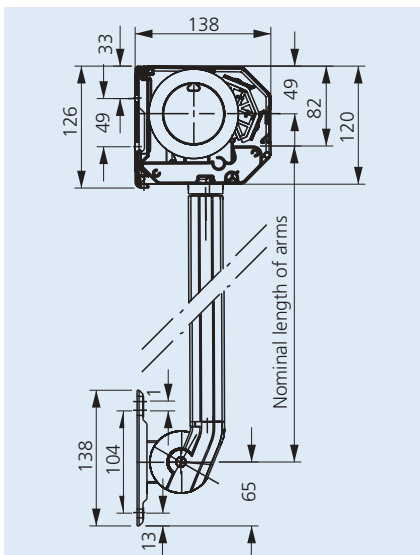
**Note:** On two- and three-section units, the dimensions of the inner units are altered accordingly.

\* 1.6 cm play required on bearing side for assembly.

## Cross-section of Aruba Carré Droparm – not to scale



We reserve the right to make technical alterations. December 2006



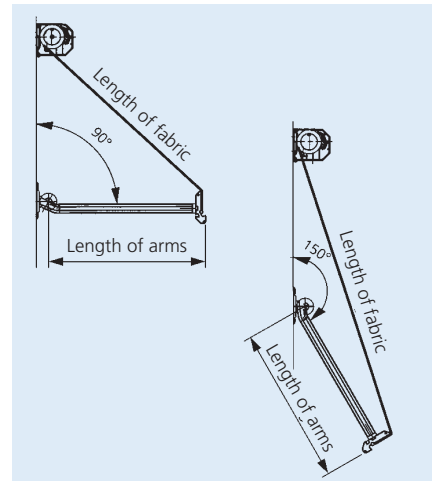
### Side view

#### Arm angle, standard 90°

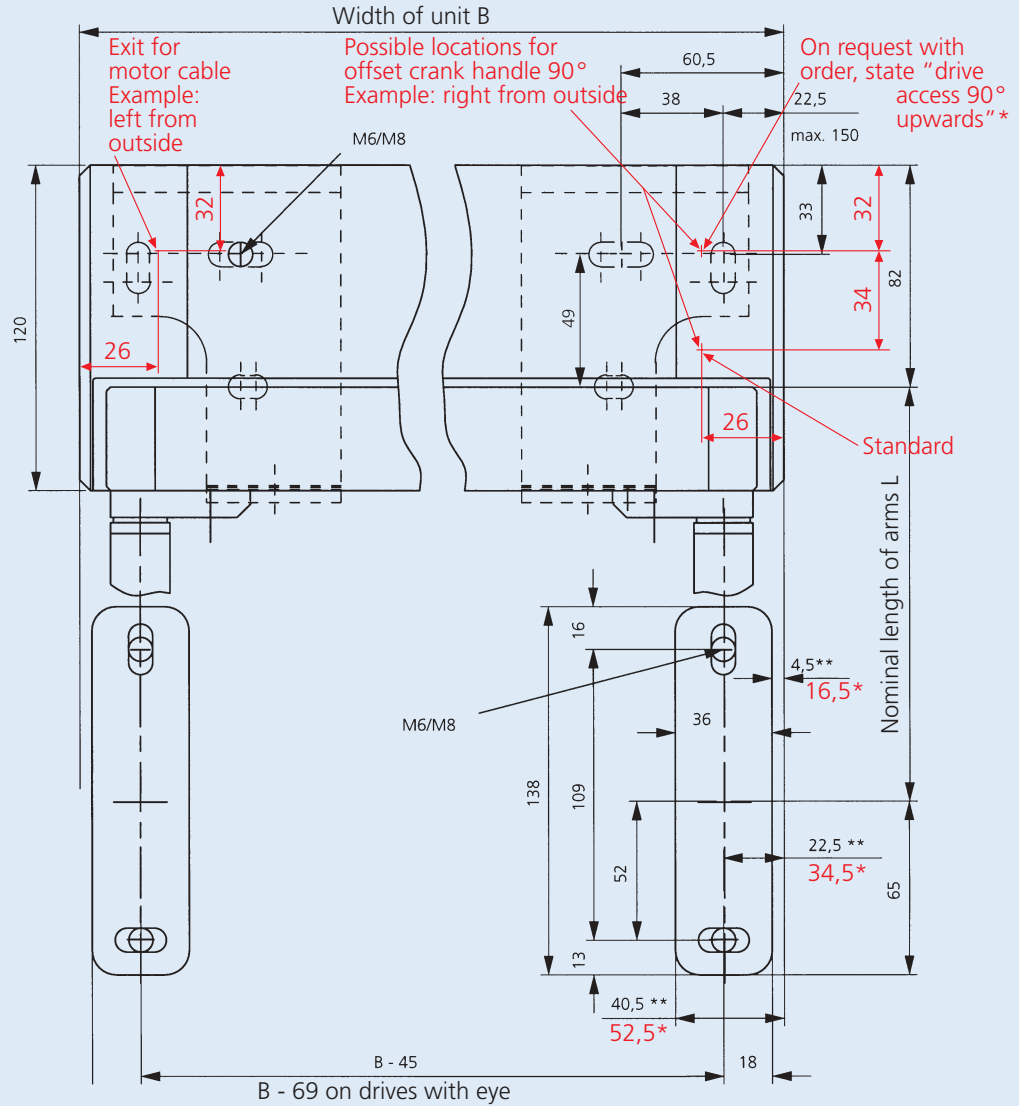
Nominal length of arms cm	Length of fabric cm
approx. 90	approx. 150
approx. 120	approx. 200
approx. 150	approx. 240

#### Arm angle, max. 150°

Nominal length of arms cm	Length of fabric cm
approx. 90	approx. 200
approx. 120	approx. 260
approx. 150	not possible



## Assembly configuration of the Aruba Carré Droparm

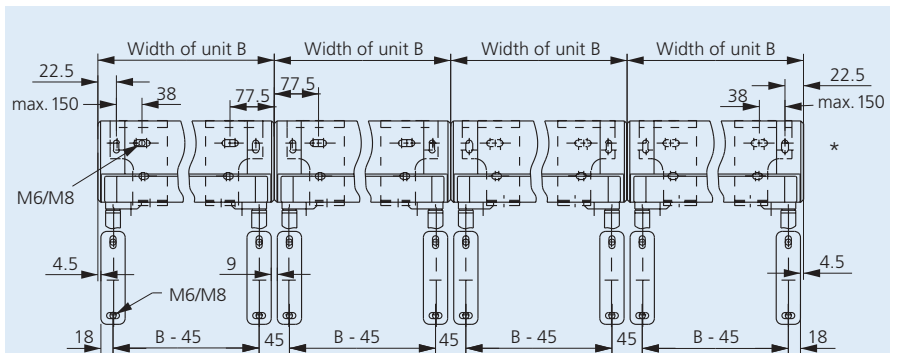


\* These dimensions apply to units with standard drive  
 \*\*These dimensions apply to units with motor or offset crank handle

\* see also page 30

## Coupling Aruba Carré Droparm

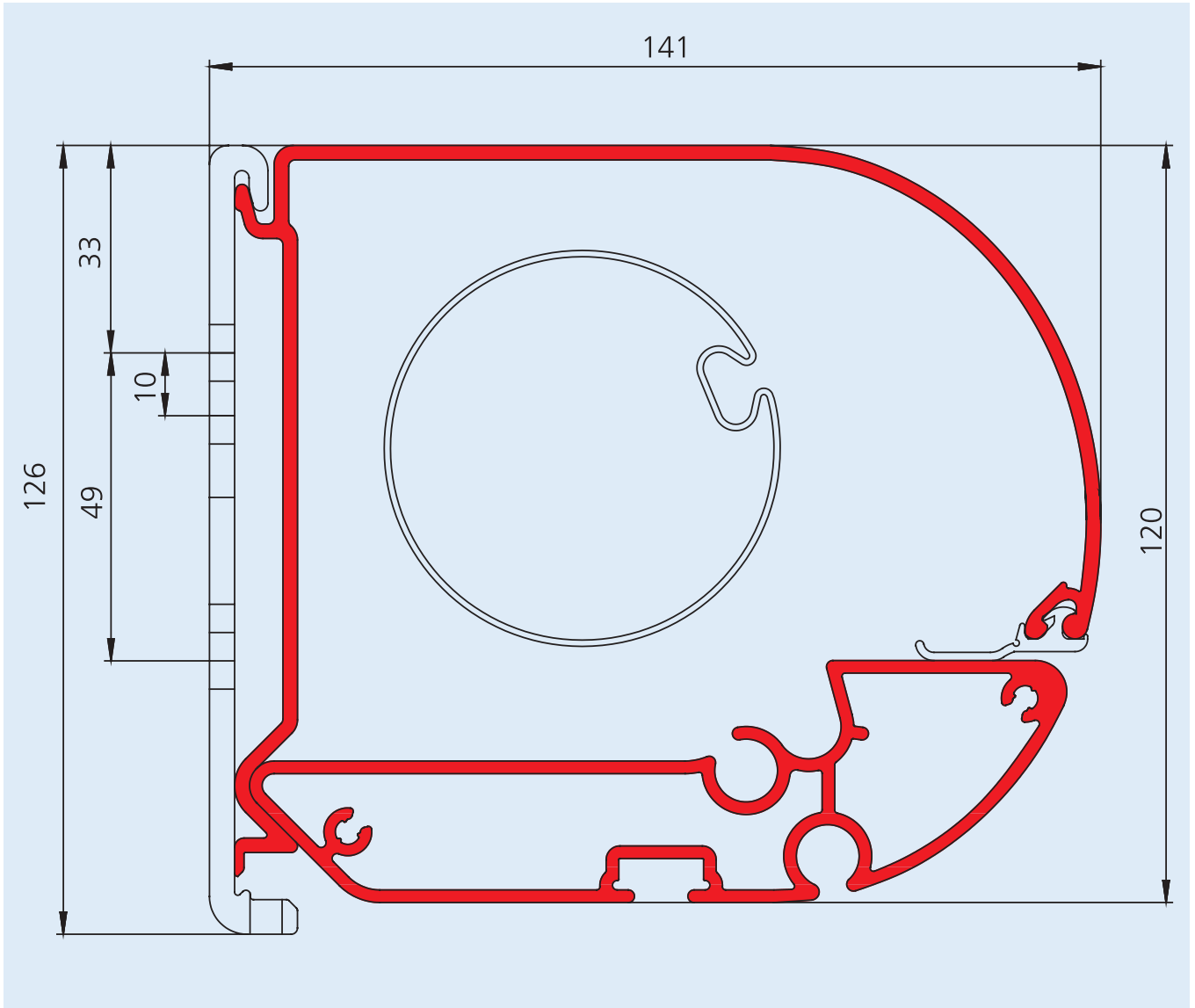
### Four-section unit



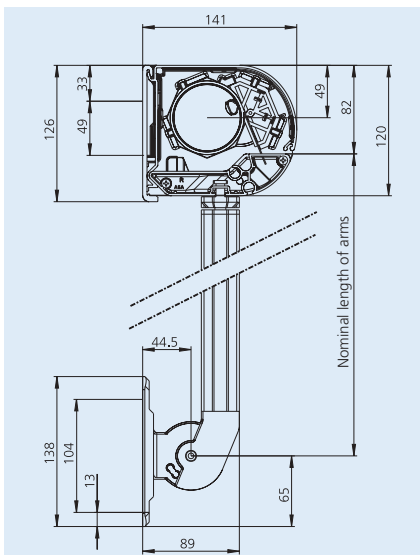
Note: On two- and three-section units, the dimensions of the inner units are altered accordingly.

\* 1.6 cm play required on bearing side for assembly.

## Cross-section of Aruba Round Droparm – not to scale



We reserve the right to make technical alterations. December 2006



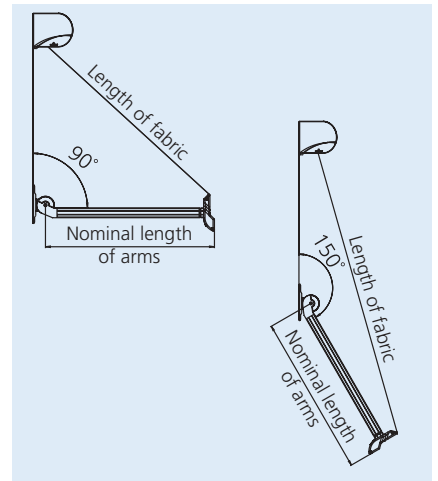
### Side view

#### Arm angle, standard 90°

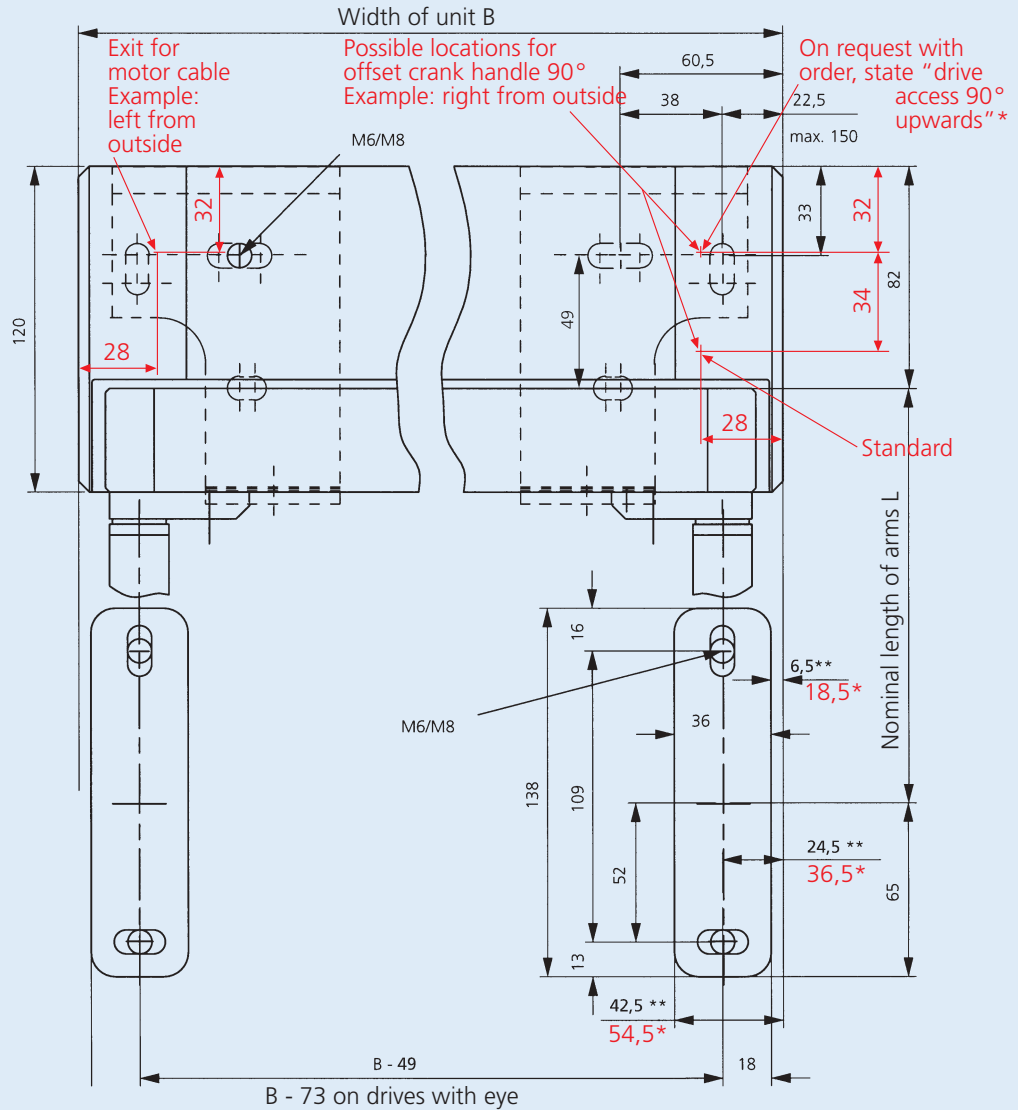
Nominal length of arms cm	Length of fabric cm
approx. 90	approx. 150
approx. 120	approx. 200
approx. 150	approx. 240

#### Arm angle, max. 150°

Nominal length of arms cm	Length of fabric cm
approx. 90	approx. 200
approx. 120	approx. 260
approx. 150	not possible



## Assembly configuration of the Aruba Round Droparm



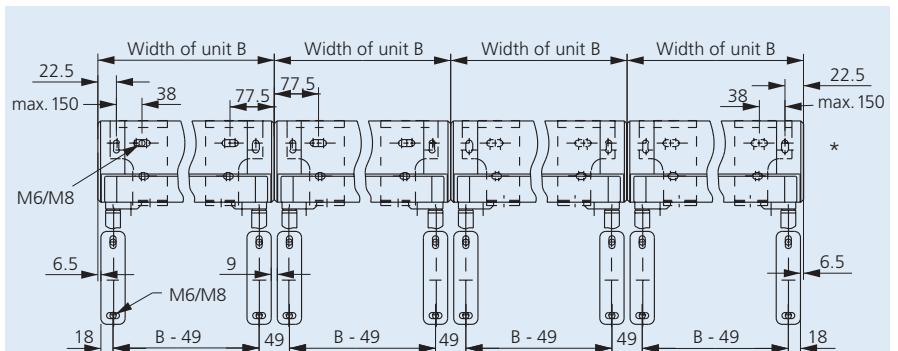
\* These dimensions apply to units with standard drive

\*\* These dimensions apply to units with motor or offset crank handle

\* see also page 30

## Coupling Aruba Round Droparm

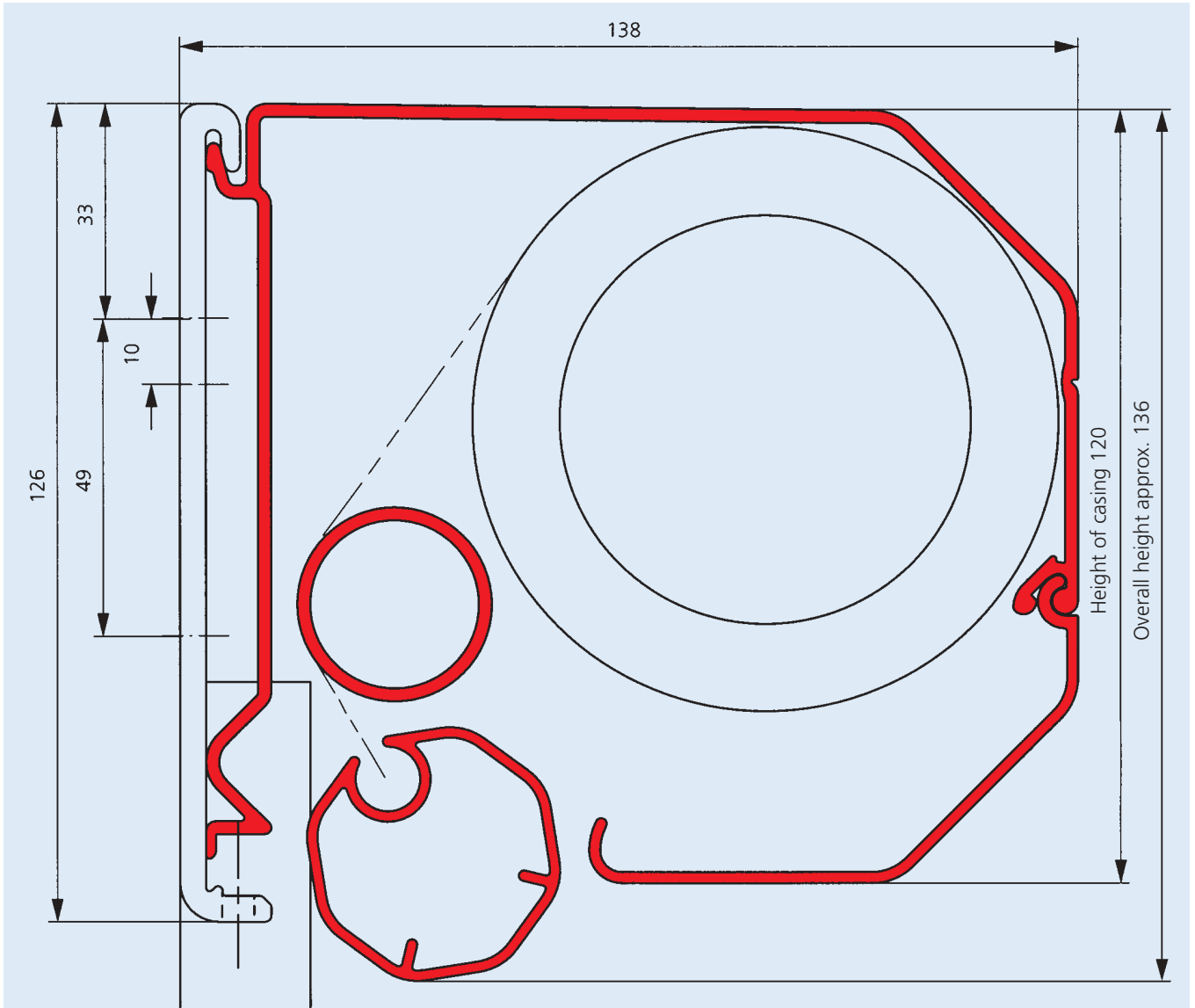
### Four-section unit



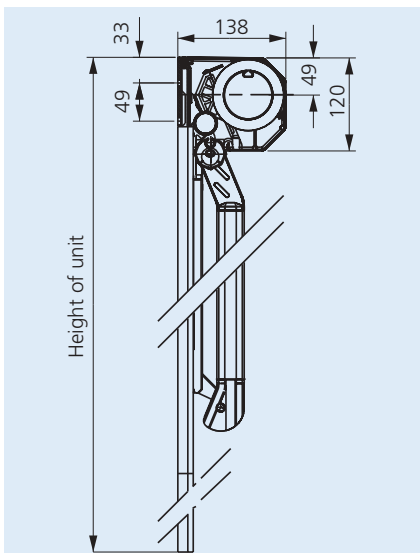
**Note:** On two- and three-section units, the dimensions of the inner units are altered accordingly.

\* 1.6 cm play required on bearing side for assembly.

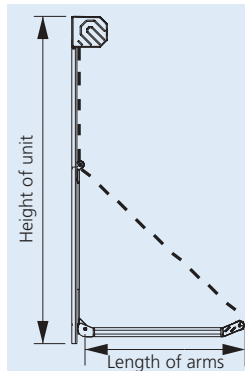
## Cross-section of Aruba Carré Markisolette – not to scale



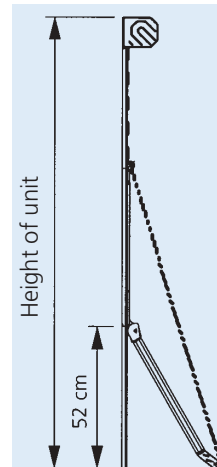
We reserve the right to make technical alterations. December 2006



### Side view



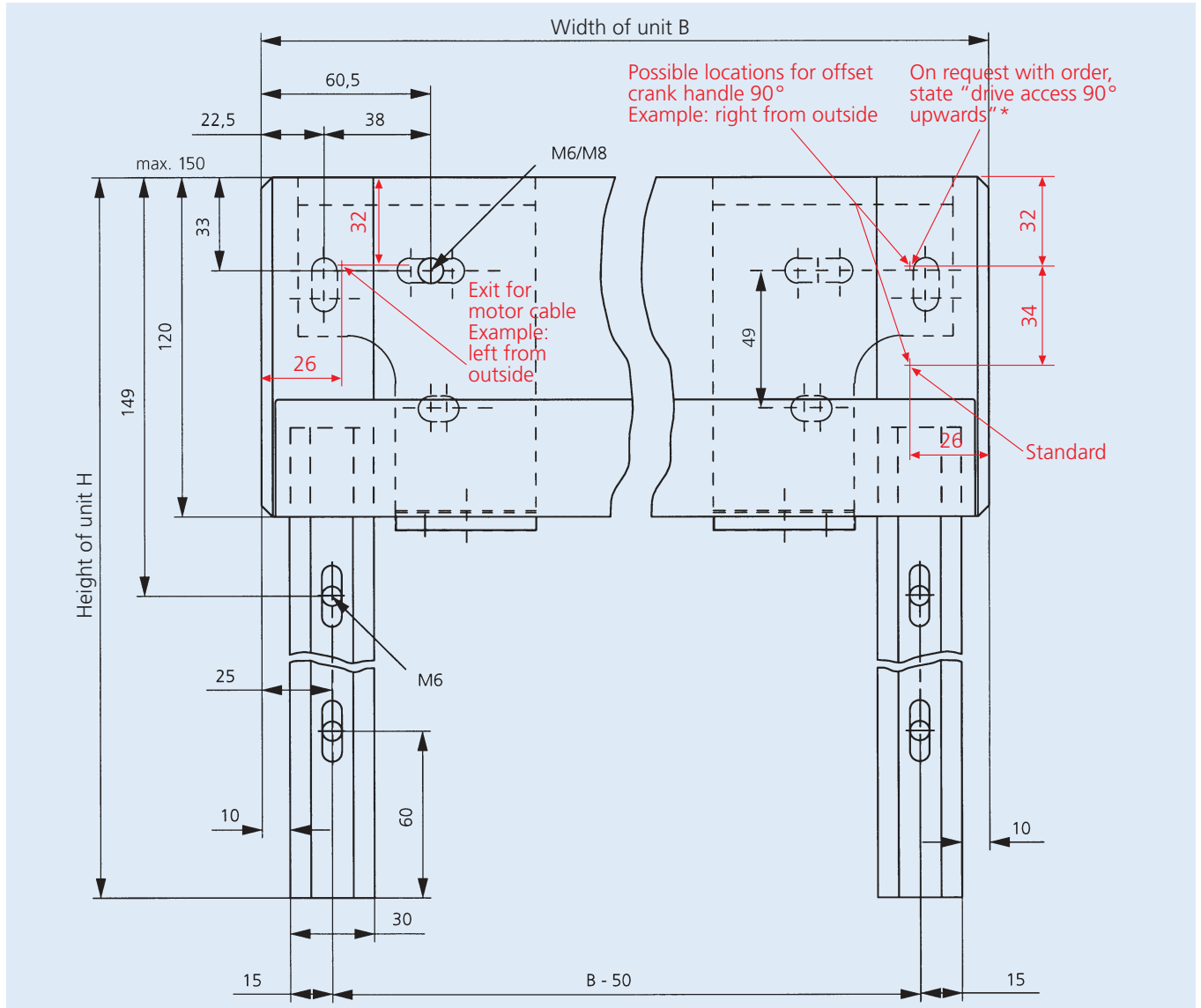
Unit height  
85 – 140 cm:  
Standard arm  
angle 90°,  
stop position at  
very bottom,  
can be altered  
easily from  
building,  
standard arm  
length 60 cm



Unit height  
above 140 cm:  
standard arm  
angle 150°  
stop position:  
52 cm



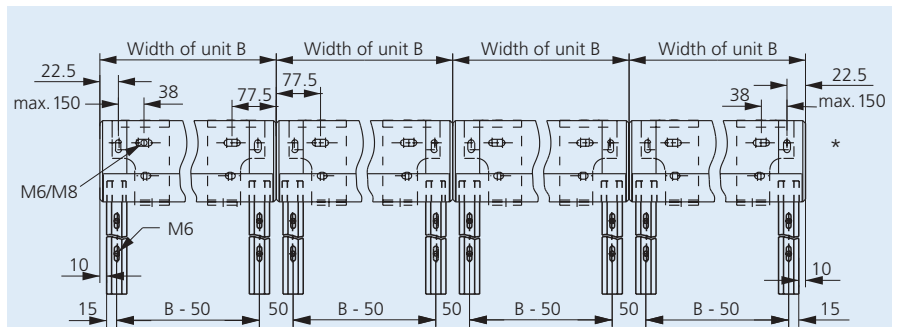
## Assembly configuration of the Aruba Carré Markisolette



\* see also page 30

## Coupling Aruba Carré Markisolette

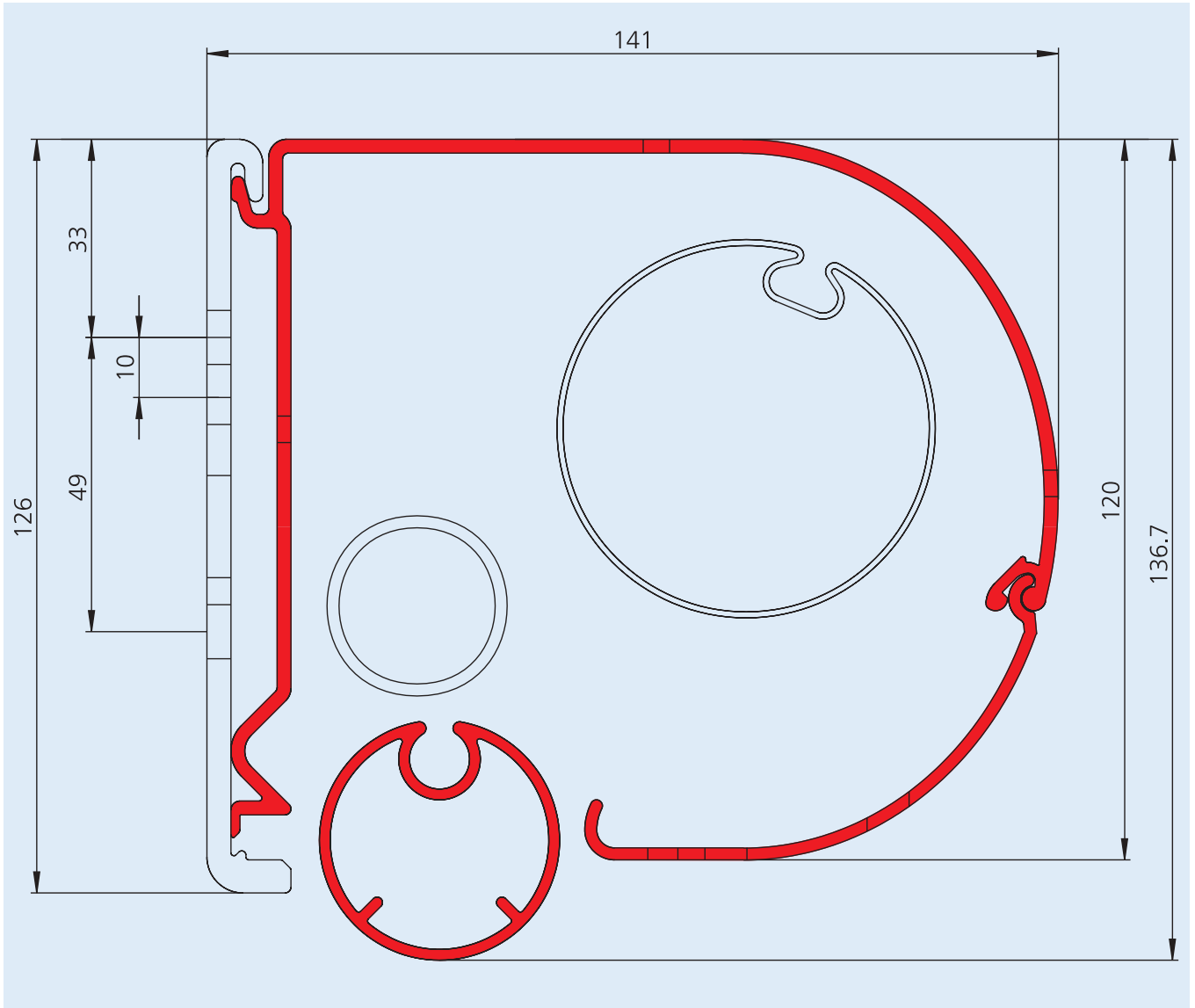
### Four-section unit



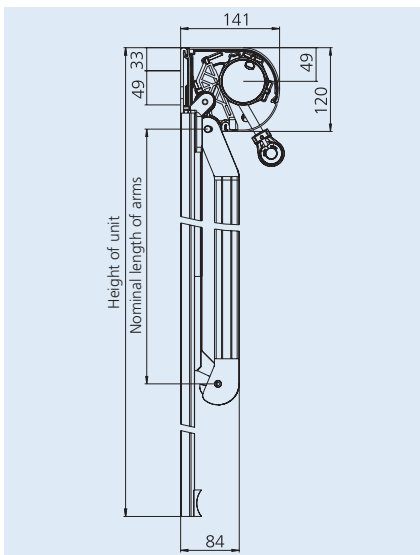
**Note:** On two- and three-section units, the dimensions of the inner units are altered accordingly.

\* 1.6 cm play required on bearing side for assembly.

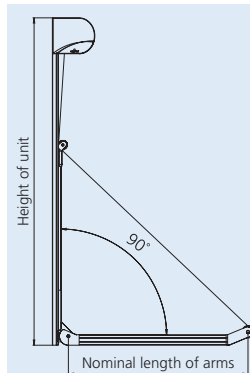
## Cross-section of Aruba Round Markisolette – not to scale



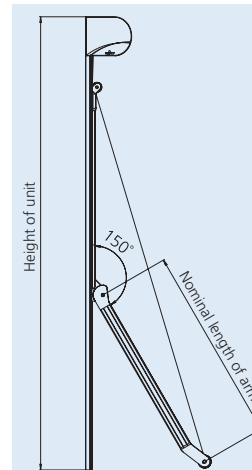
We reserve the right to make technical alterations. December 2006



### Side view

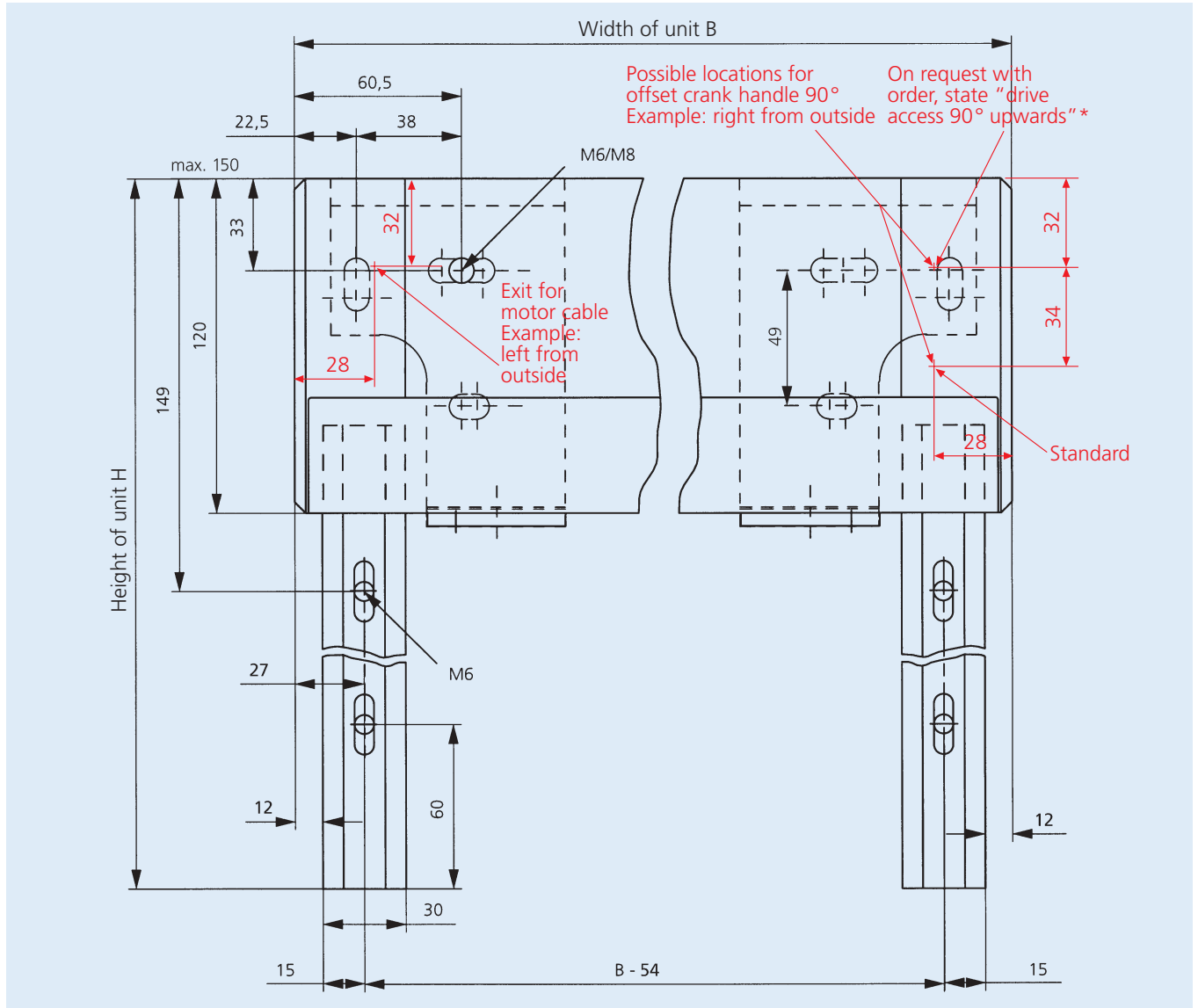


Unit height  
85 – 140 cm:  
standard arm  
angle 90°,  
stop position at  
very bottom,  
can be altered  
easily from  
building,  
standard arm  
length 60 cm



Unit height  
above 140 cm:  
standard arm  
angle 150°  
stop position:  
52 cm

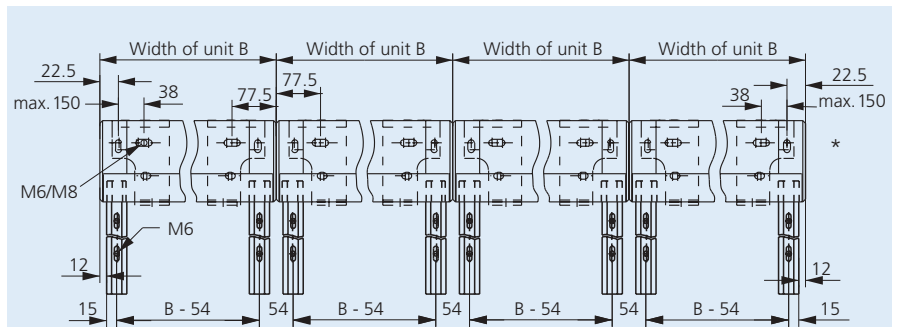
## Assembly configuration of the Aruba Round Markisolette



\* see also page 30

## Coupling Aruba Round Markisolette

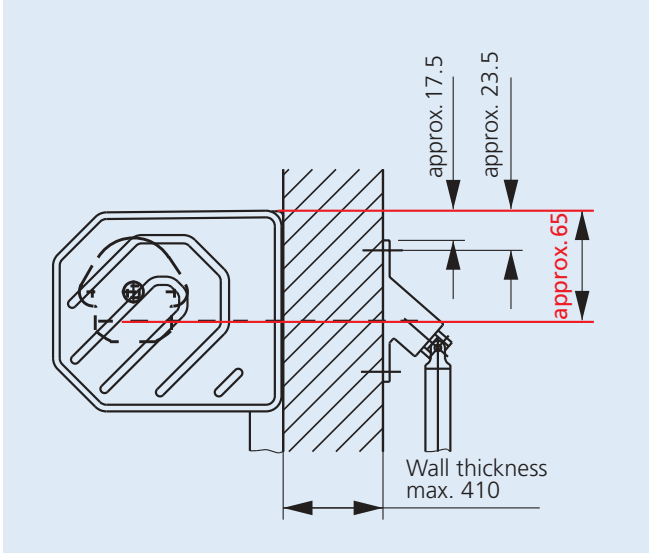
### Four-section unit



**Note:** On two- and three-section units the dimensions of the inner units are altered accordingly.

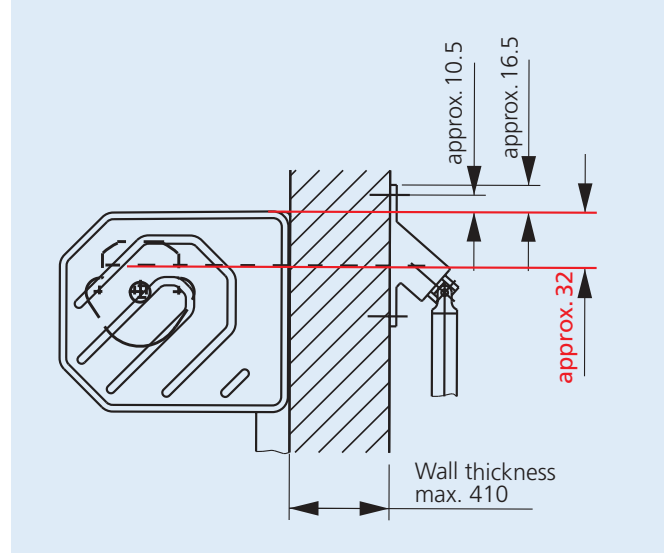
\* 1.6 cm play required on bearing side for assembly.

## Offset crank handle Markisolette/Vertical



Standard horizontal location of offset crank handle

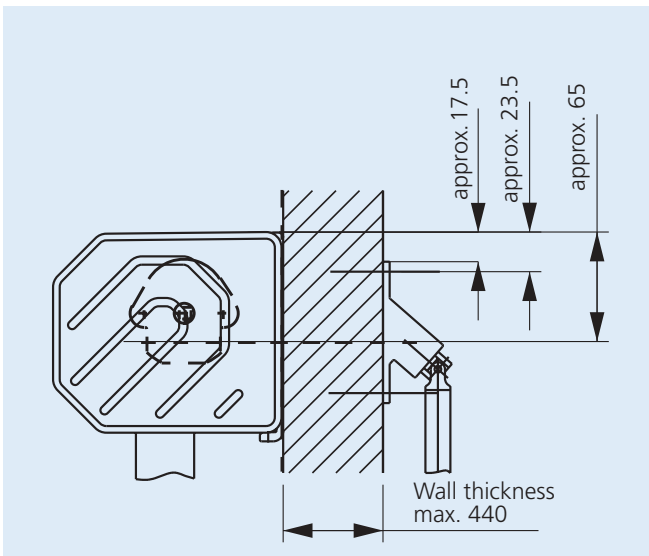
**i** Warning: In this case, the bottom rail of the Markisolette retracts by 7 mm less. Consequently, the total height of the casing is approx. 143 mm (Standard 136 mm).



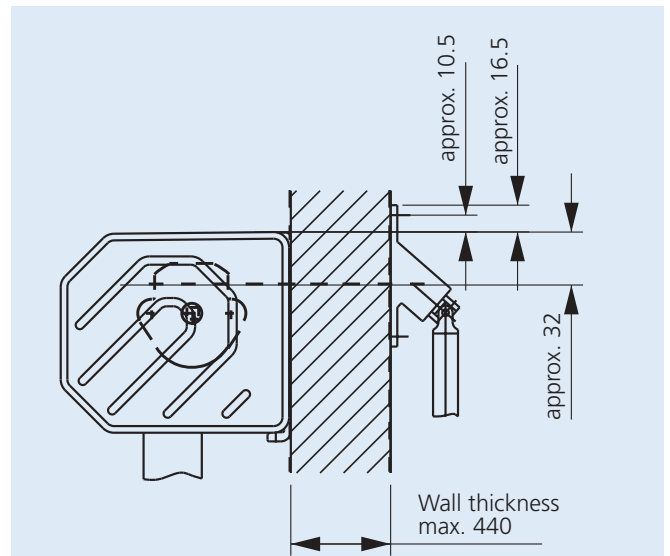
Special order: Location of offset crank handle horizontal; higher due to different position of drive

**i** Warning: In this case, the casing bearing must be moved at least 20 mm inwards.

## Droparm crank handle

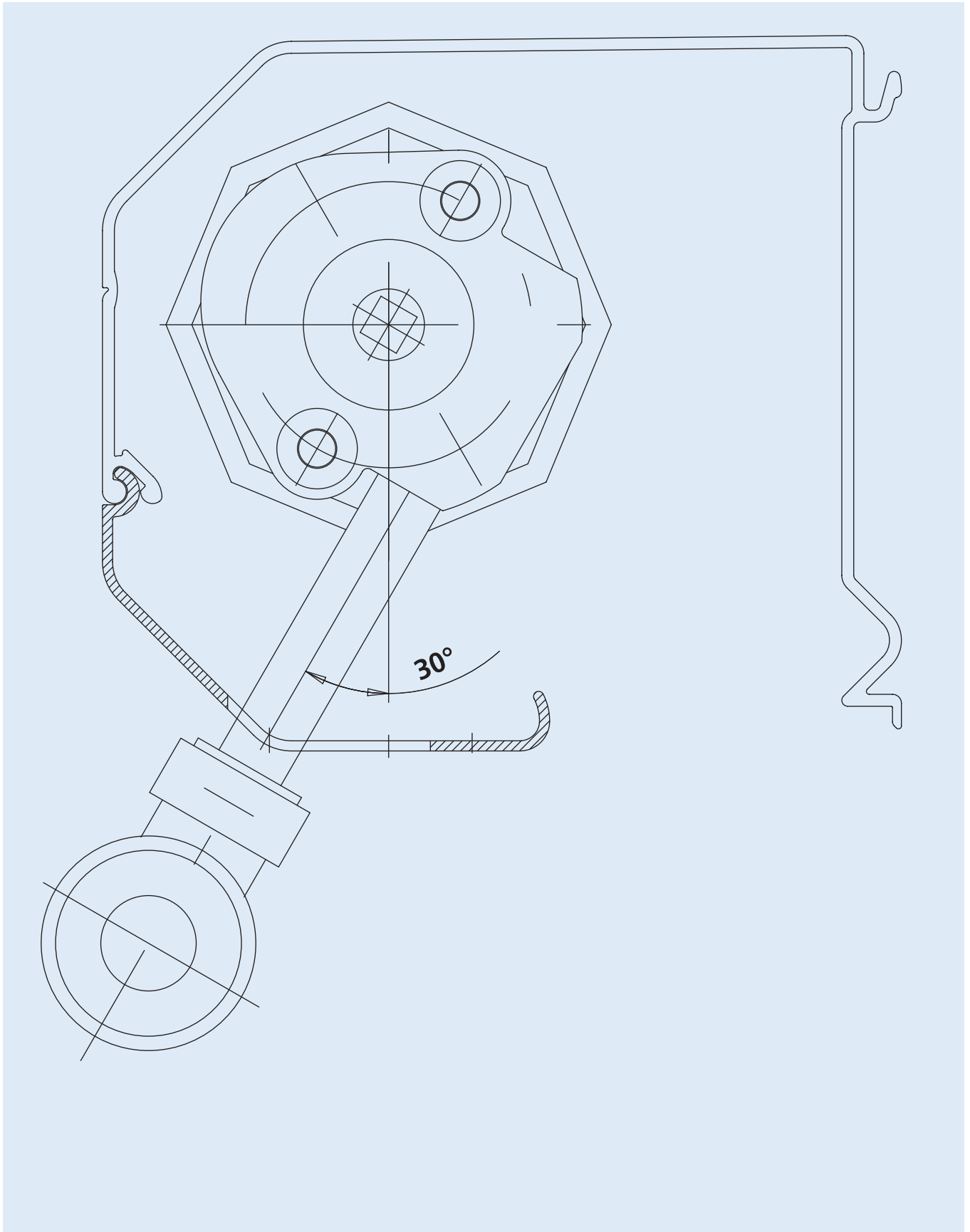


Standard horizontal location of offset crank handle



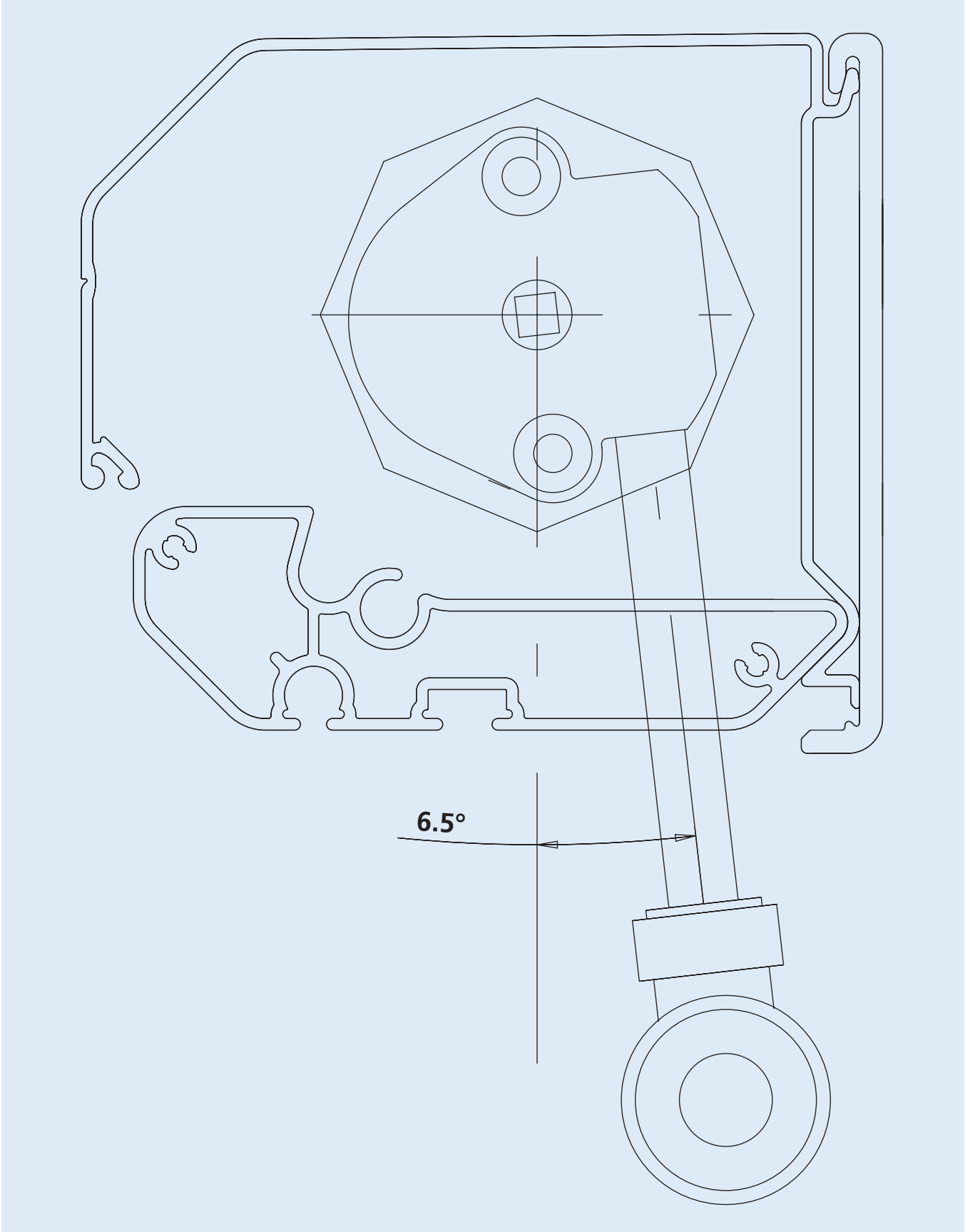
Special order: Location of offset crank handle horizontal; higher due to different position of drive

## Aruba Vertical/Markisolette – Standard handle position 30° towards front



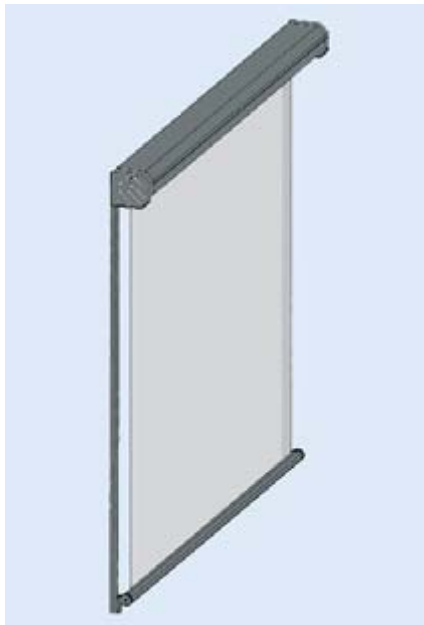
We reserve the right to make technical alterations. December 2006

**Aruba Droparm – Standard handle position 6.5° towards rear**



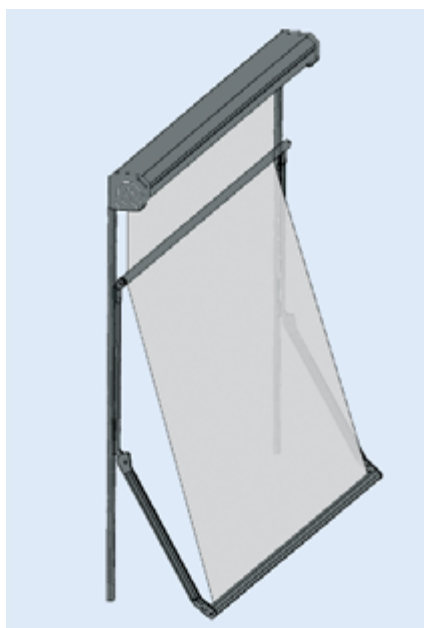


## Punched holes: guide rail **Aruba Vertical**



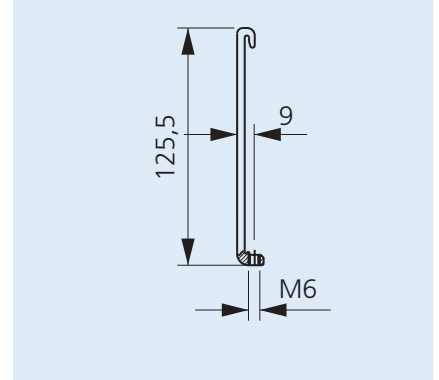
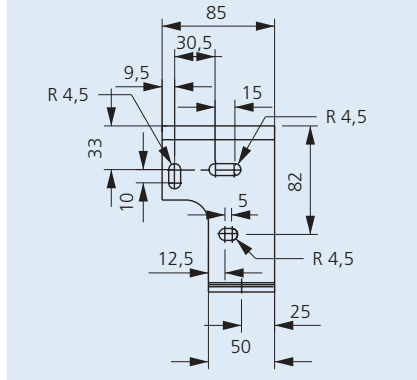
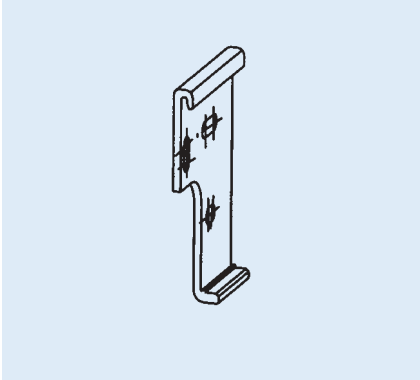
Length of guide rail	Standard number of holes for affixing the guide rail
50 cm to 87 cm	2
96 cm to 170,9 cm	3
171 cm to 245,9 cm	4
246 cm to 260 cm	5

## Punched holes: guide rail **Aruba Markisolette**



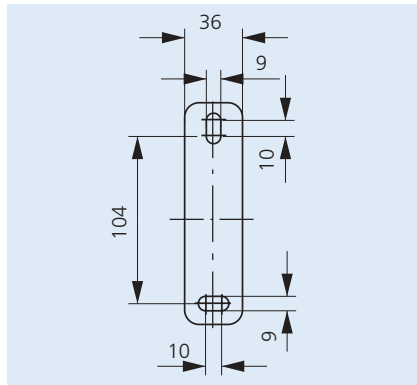
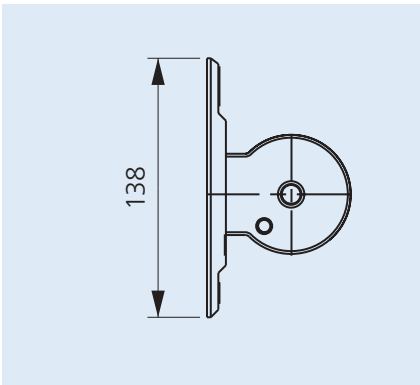
Length of guide rail	Standard number of holes for affixing the guide rail
85 cm to 140,4 cm	2
140,5 cm to 215,4 cm	3
215,5 cm to 260 cm	4

## Standard attachment



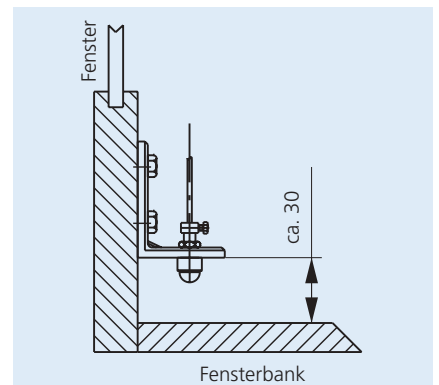
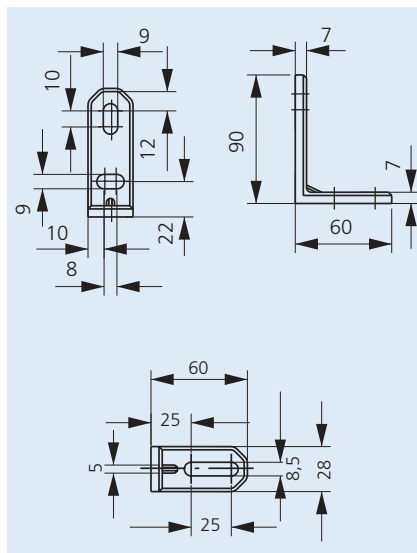
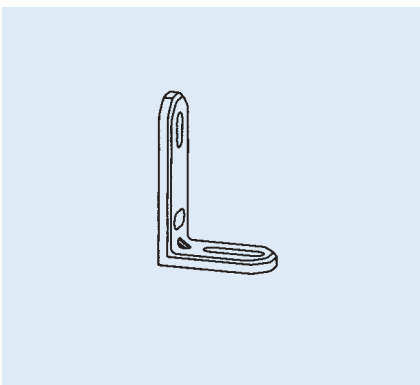
Casing bracket, left or right

## Standard attachment for droparm versions



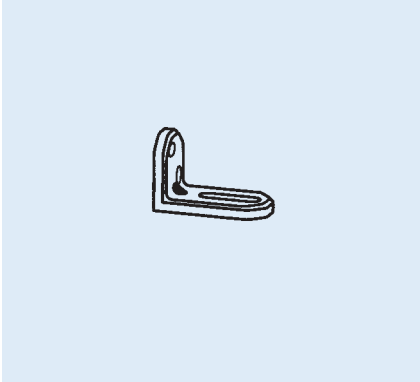
Arm wall bracket

## Standard attachment for wire versions

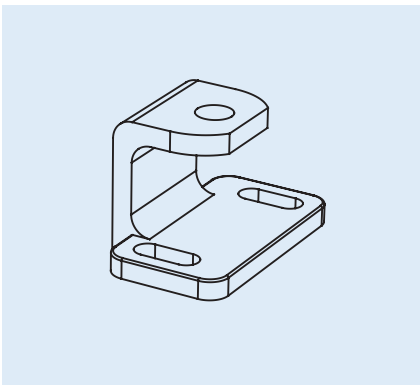
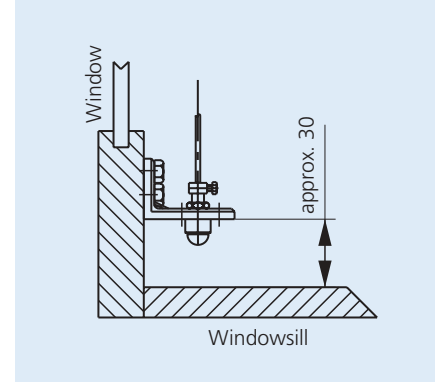
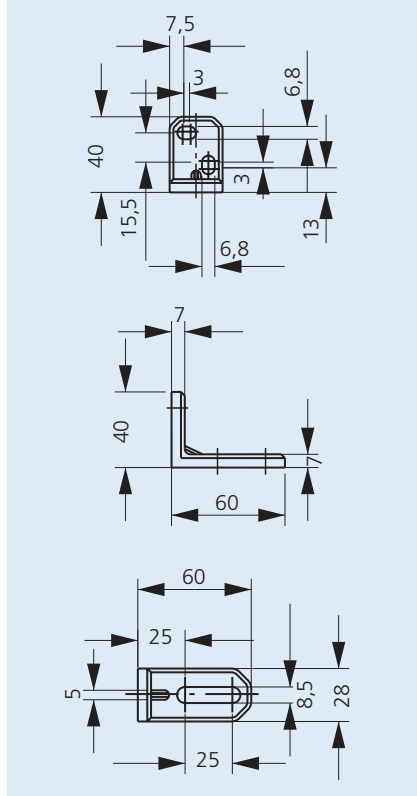


Wire bracket

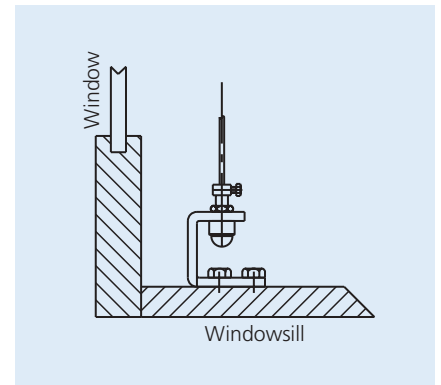
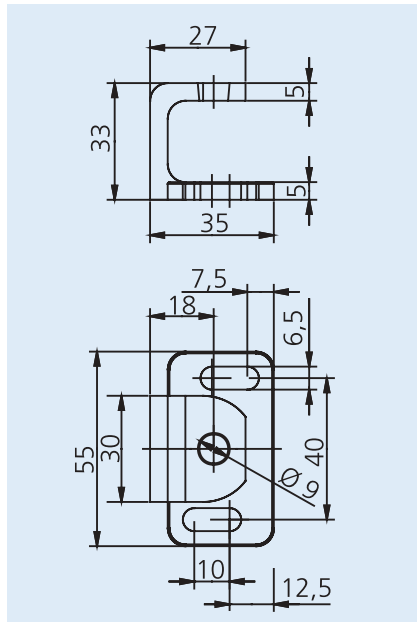
## Special attachment for wire versions



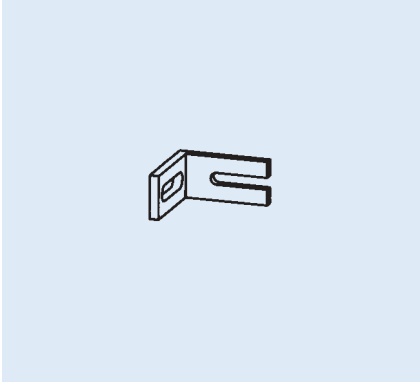
Wire bracket, small



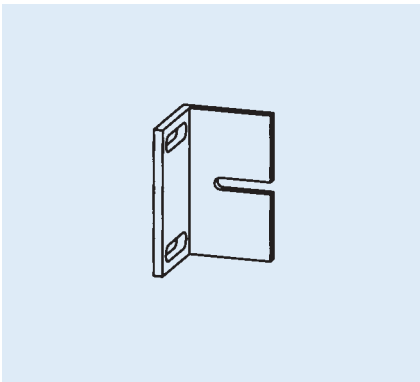
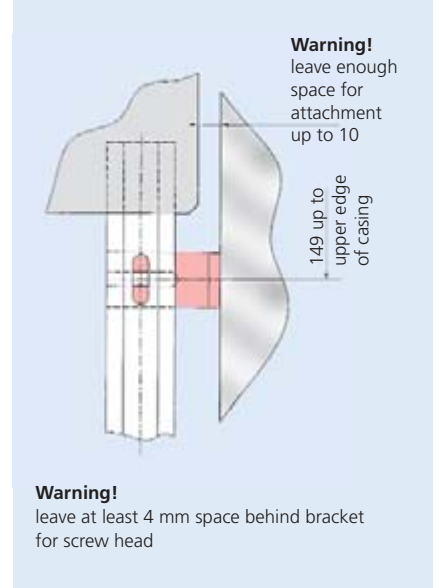
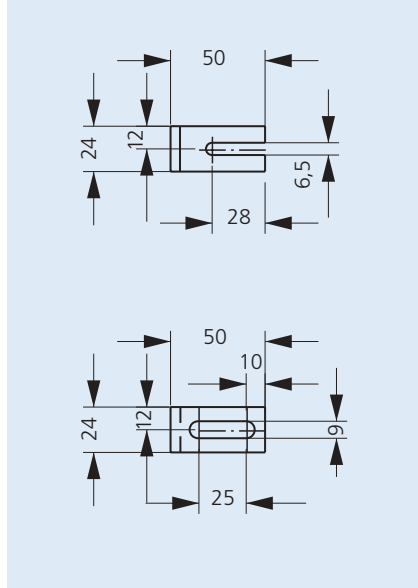
Windowsill wire bracket



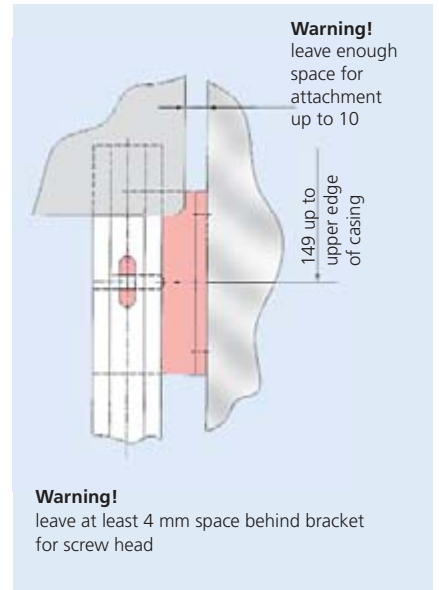
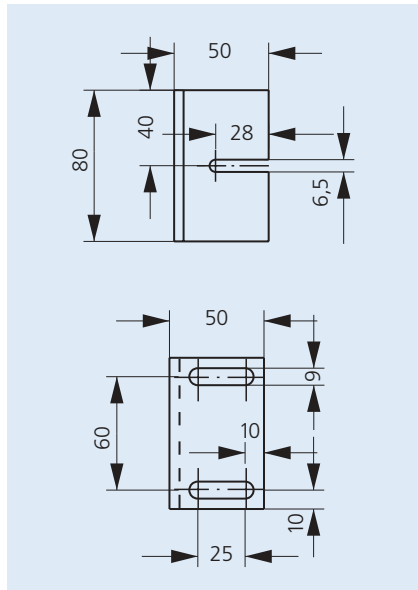
## Special attachment for Vertical/Markisolette versions



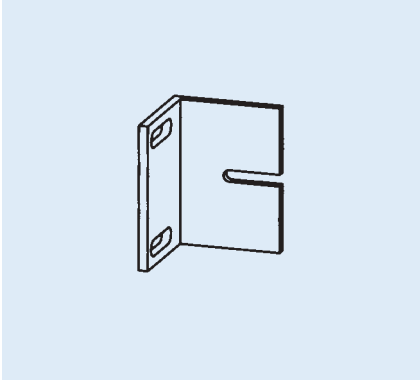
Small embasure bracket for guide section



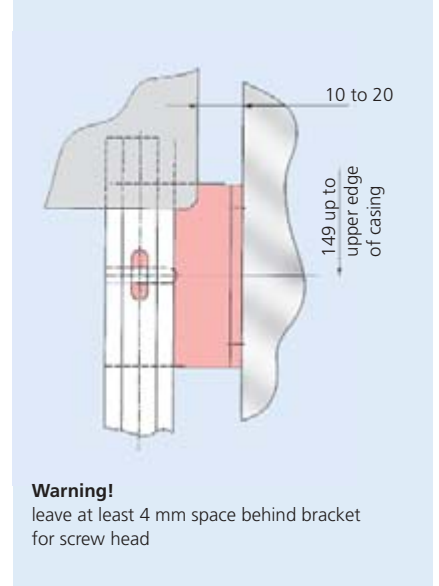
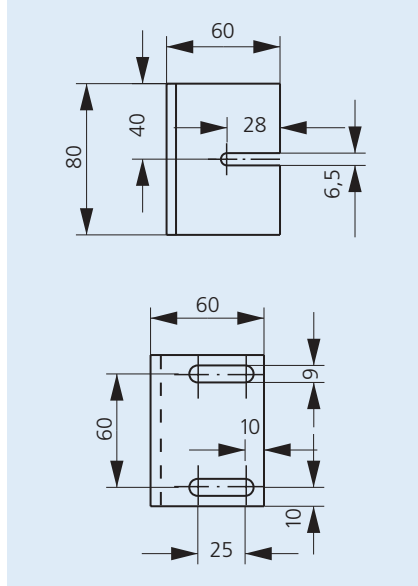
Narrow embasure bracket for guide section



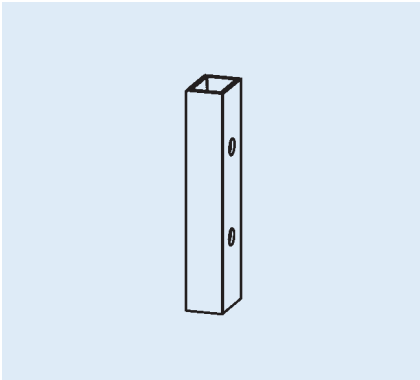
## Special attachment for Vertical/Markisolette versions



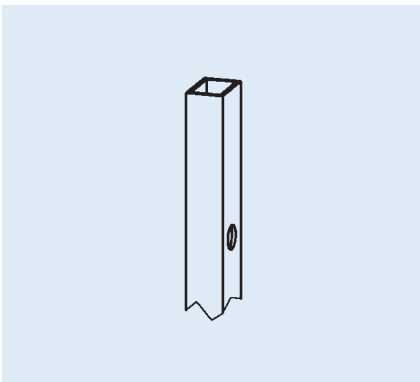
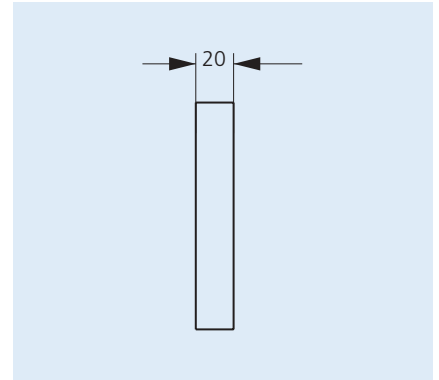
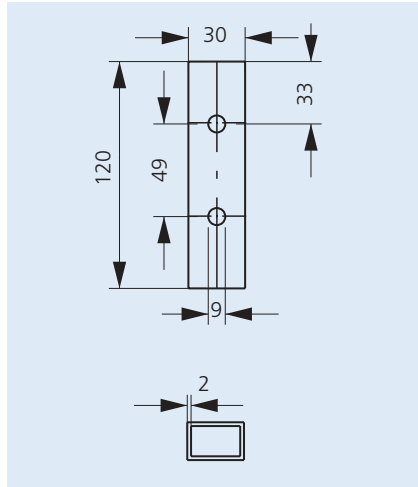
Wide embrasure bracket for guide section



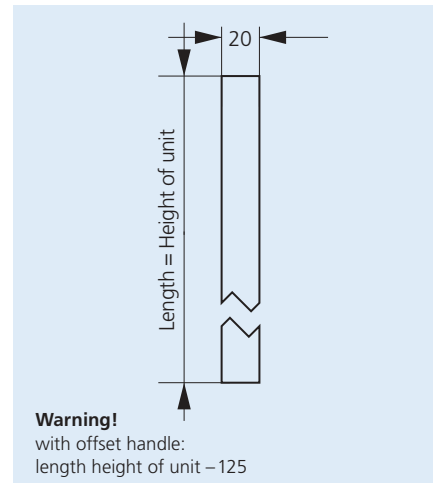
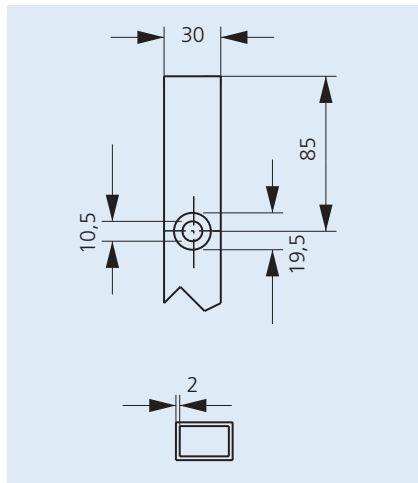
**Warning!**  
leave at least 4 mm space behind bracket for screw head



Casing bracket reinforcement

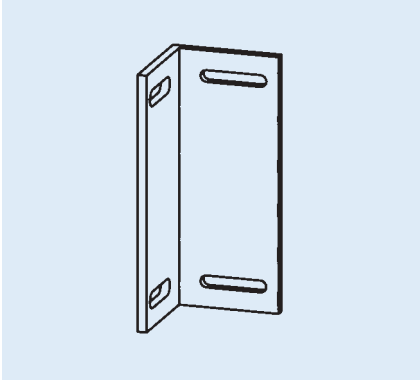


Guide section reinforcement

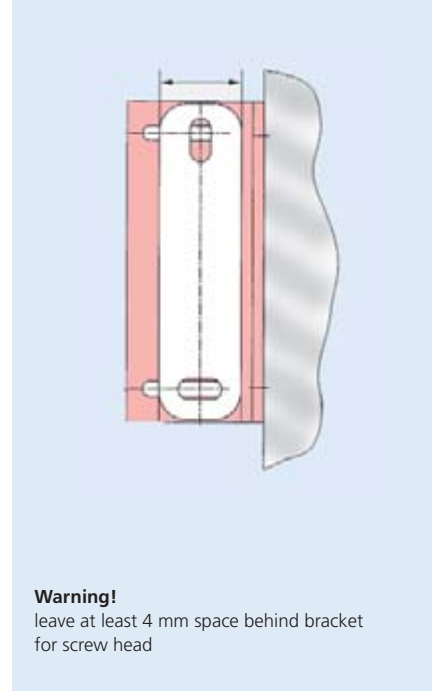
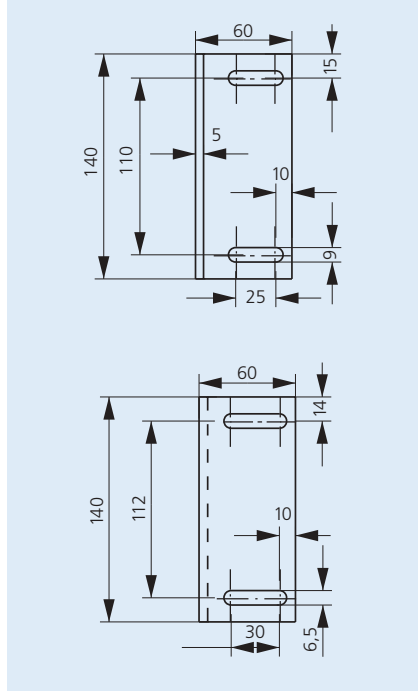


**Warning!**  
with offset handle:  
length height of unit - 125

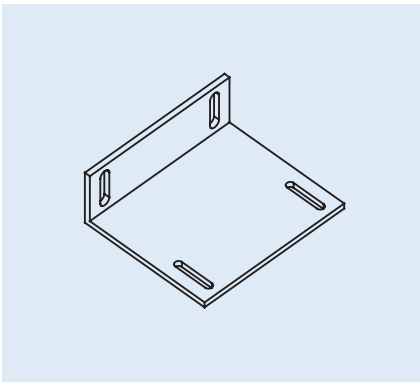
## Special attachment for droparm versions



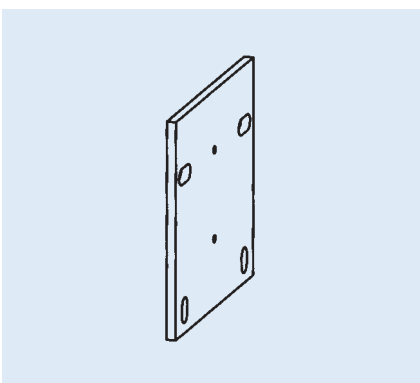
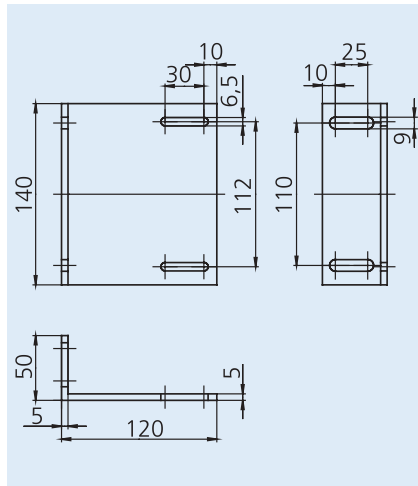
Embrasure bracket  
for arm wall bracket



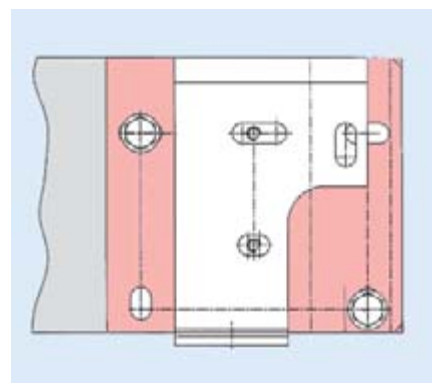
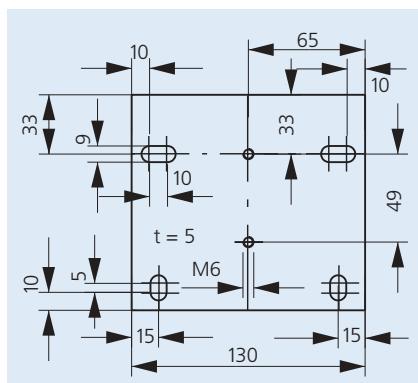
**Warning!**  
leave at least 4 mm space behind bracket  
for screw head



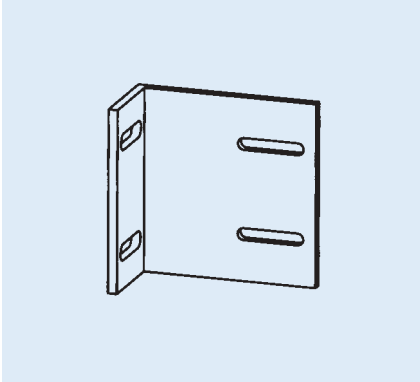
Long embasure bracket  
for arm wall bracket



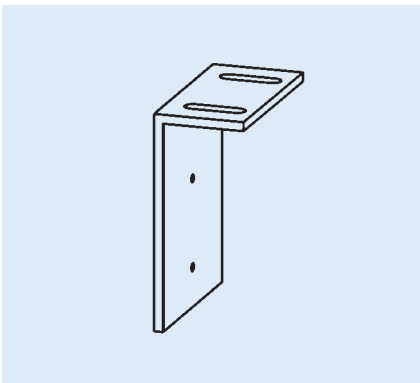
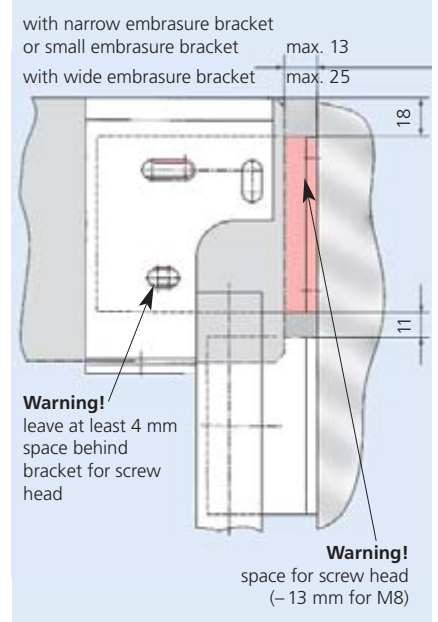
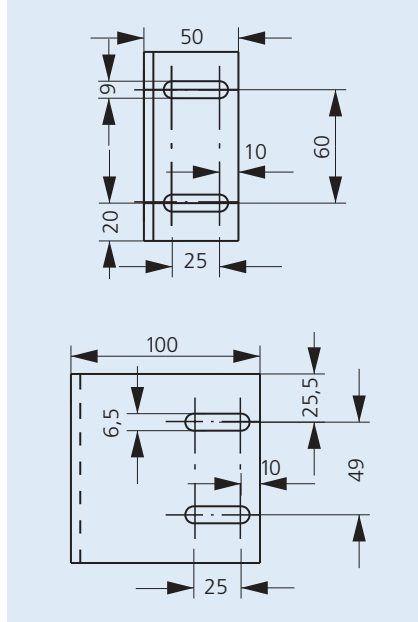
Casing bracket mounting plate



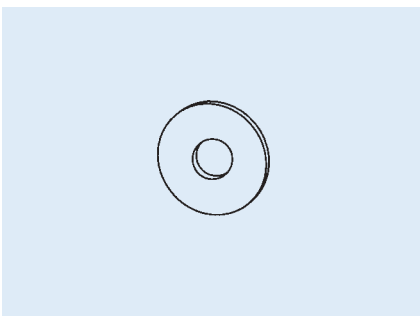
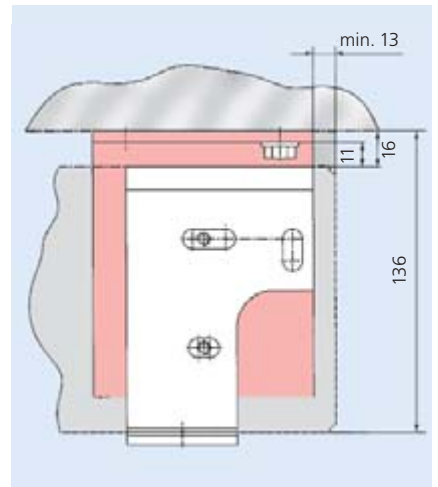
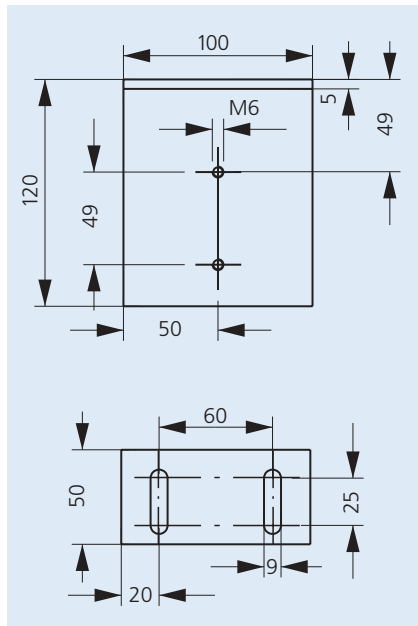
## Special attachment



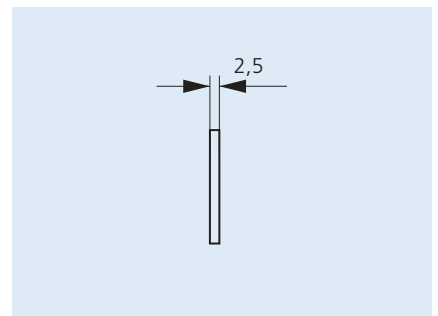
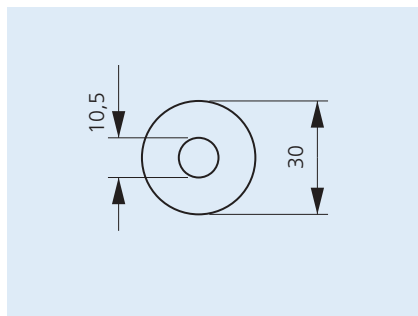
Embrasure bracket for casing bracket



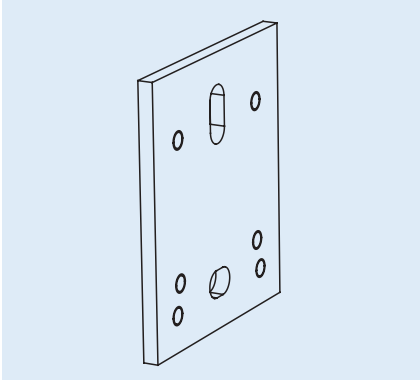
Ceiling bracket for casing bracket



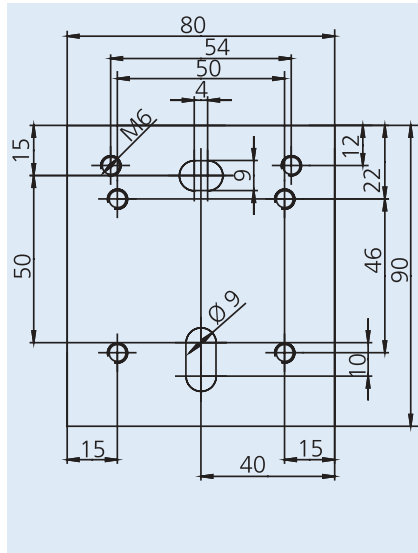
Spacer



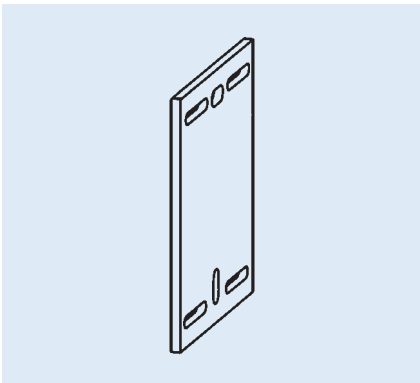
## Special attachment for coupling wire version



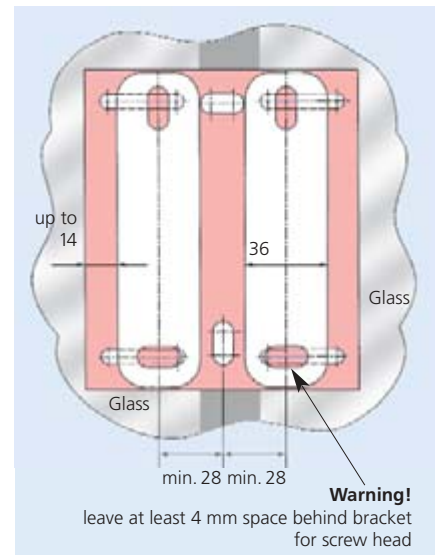
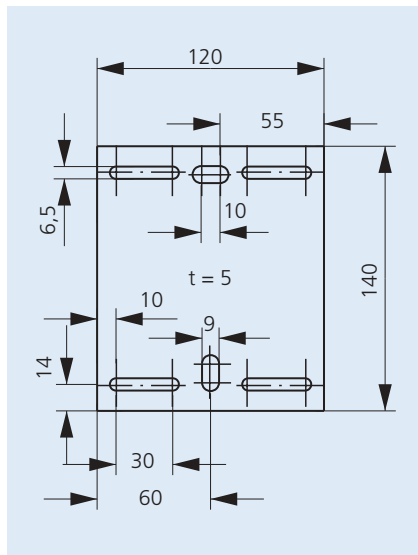
Wire bracket coupling mounting plate



## Special attachment for coupling droparm version

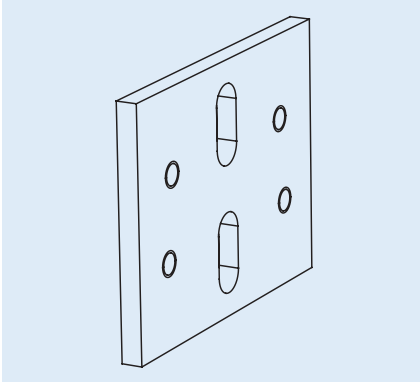


Windowsill wire bracket

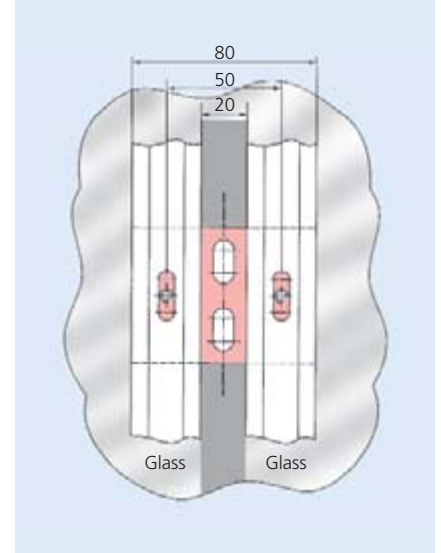
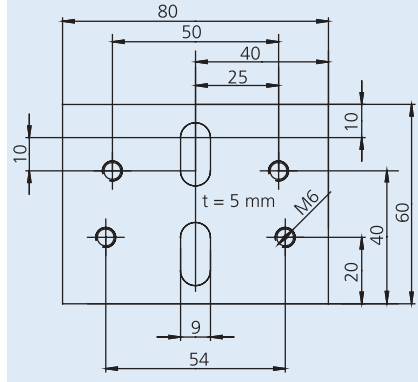




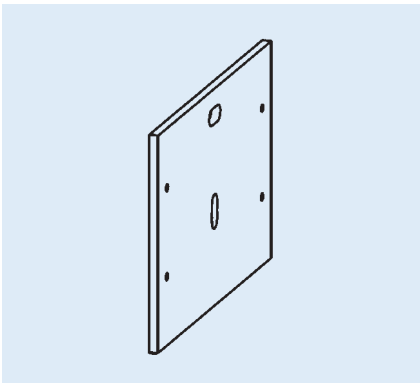
## Special attachment for coupling Markisolette/Vertical versions



Guide section coupling mounting plate



## Special attachment for coupling



Casing bracket coupling mounting plate

